

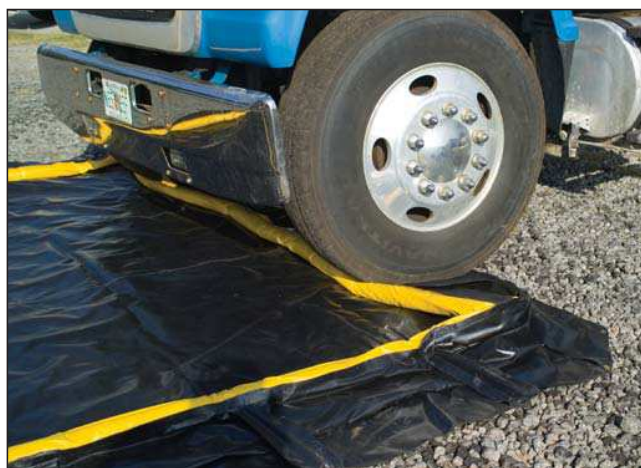


Ultra Containment Berms

Rapid Rise Model

NEW!

Sidewalls Stay Lowered And Out Of The Way Until They Are Needed



- Sidewalls remain down during normal operations, loading and unloading. Vehicles and equipment can drive in and out from any angle, with no sidewall set-up or take-down required.
- In the case of a spill, the foam ring around the top perimeter of the Containment Berm rises with the level of spilled liquid.
- Custom sizes available.
- Standard material of construction is Copolymer 2000™.
- **Helps meet EPA Container Storage Regulation 40 CFR 264.175 and SPCC requirements.**



ULTRA-CONTAINMENT BERMS, RAPIDRISE MODEL			
Dimensions	Part #	Weight	Containment Capacity
1219 x 1828 x 304	8430	13 kg	677 litres
1828 x 1828 x 304	8431	15 kg	1018 litres
3048 x 3048 x 304	8432	28 kg	2831 litres
3657 x 7924 x 304	8437	67 kg	8831 litres
4572 x 15240 x 304	8433	126 kg	20384 litres
4572 x 20116 x 304	8434	161 kg	21236 litres
Options: Ground Tarps, Track Belts, Self-Bailer			