

Roof Rack Systems

Heavy Duty

What are they made of?

Rhino-Rack products are made of the highest quality, Australian produced materials. The legs are manufactured from UV stabilised glass reinforced nylon. The cross bars are extruded structural aluminium available in silver or black. All other components are stainless steel or have an anti-corrosive coating.

How much can they carry?

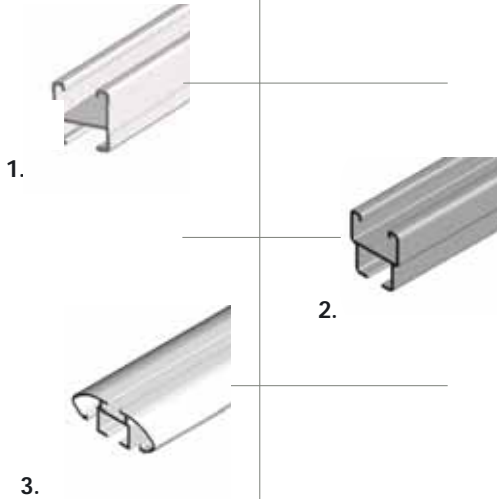
This varies considerably from vehicle to vehicle, so always check the manufacturer's recommended specifications. Gutter Mount legs are rated to 100kg per pair of crossbars. Removable rack systems to suit gutterless type vehicles using the Rhino Mont Blanc (RMB) bars are usually rated to 75kg per pair of crossbars. (Ref Fitting Guide) While the Track Mount systems are rated to 100kg per pair of crossbars, the capacity restriction is relative to the roof of the vehicle not the roof racks.



Vehicles with no rain gutters

Rhino-Rack has a permanent Track Mount system which allows for adjustable bar positioning. The Rhino Fixed Mount system is mounted in one set position and used on vehicles with limited mounting area or load positions. We have also incorporated Mont Blanc's range of fully removable gutterless style end supports into our Heavy Duty range. So if your vehicle has no gutters, it shouldn't be a problem!



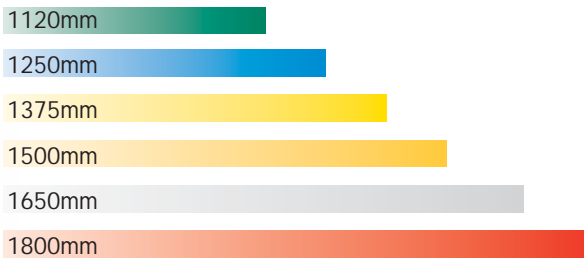


Roof Cross Bar Types

1. Heavy Duty Rhino-Rack Cross Bar section (RB).
2. Rhino Mont Blanc cross bar section (RMB).
Only utilised in conjunction with Mont Blanc end supports.
3. Rhino Heavy Duty Aero Bar cross bar section (RAB).
Aerodynamic style bar for use with Heavy Duty style mounts.



Heavy Duty Bar Lengths



Note: Rubber buffer strip supplied for all cross bars.

Special lengths available to order.

Finishes:

- Powder coated (Black)
- Clear anodised (Silver)

Heavy Duty Aerodynamic Crossbar

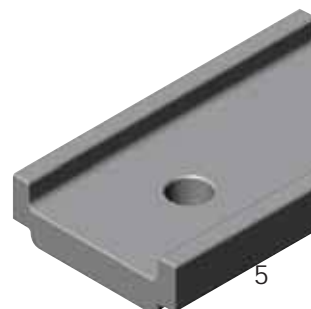
Popular for cars that need Heavy Duty racks and strength, but want more style.

Leg Height Spacers

These enable levelling of multiple bar systems on vehicles with a curved roof.



Part# LHSPAIR & LHS2PAIR
 Note: 1 LHS = 10mm in height
 2 LHS = 20mm in height.
 Hardware (Bolt Supplied)



Roof Rack Systems

Heavy Duty



Pad Mount – RCP

Our Pad Mount system is currently available for Toyota 100 Series, Toyota Prado, Honda CRV and Nissan X-Trail and many more are always being developed.



Pad Mount – RLCP

Our Pad Mount system is also available with our Aero style cross bar.



Stylish In Design

The Heavy Duty Pad Mount systems integrate the sleek stylish lines of the vehicle while still incorporating the Rhino-Rack strength and durability that we are renowned for.

The Pad Mount systems have the added advantage of all bars being level in height along the vehicle to assist in load carrying and looks.

Of course all our existing Heavy Duty accessories are compatible with these systems and naturally, our security hardware is a standard feature.

Precision moulded inserts are provided to cover the pads when the crossbars are removed.



Rail Mount – CXB

Universal fitting for most factory longitudinal rails. Twin bolt tightening system for maximum clamping strength and easy adjustability.

- Tested to AS1235–2000.
- Supplied with security hardware.
- Unique design.
- 3 or more crossbars may be levelled, with the addition of the CXBS range of leg height spacers.





Fixed Mount
 Standard Fixed Mount legs.
 Fastened permanently in one position.
 Available in 50mm and 80mm height.



Aero Bar Gutter Mount
 Removable Gutter Mount legs with Heavy Duty Aero Bar.
 Available in 110mm, 150mm, 210mm and 280mm
 leg heights.



Standard Track Mount
 Tracks are permanently mounted to the vehicle roof.
 Crossbars can be adjusted along the tracks to
 accommodate your various loads.
 Available in 50mm and 80mm height.



Standard Aero Bar Track Mount
 Tracks are permanently mounted to the vehicle roof.
 Heavy Duty Aero crossbars can be adjusted along the
 tracks to accommodate your various loads.
 Available in 50mm and 80mm height.



Roof Rack Systems

Heavy Duty Accessories



Conduit Cap
Impact resistant screw on caps.



Conduit
100mm and 150mm diameter, available in STD 3m and 4.6m lengths.



Conduit Clamp
Part# RPC4
100mm clamp. (1pr)
Part# RPC6
150mm clamp. (1pr)



Ladder Peg
Part# RSLP
Small 75 mm (1pr)
Part# RMLP
Medium 135mm. (1pr)
Part# RLLP
Large 210mm. (1pr)



Rollers
Part# RR540
Also available in various lengths.



Tie Down Strap with Metal Camloc Buckle
Part# RTD3, RTD4, RTD5
Available in 3.5m, 4.5m and 5.5m lengths.
Load Rating: 310kg (1pr)



Fixing Brackets
Part# THRBR & A116B
A116B-Right Angle Fastening Bracket.
Hardware included.



Beacon Mounting Plate
Part# RBP



Nylon Load Holder
Part# RLH (1pr)
125mm high





Suggested Combination

Ladder Strap
Part# RLS5
Camloc type features 'snap on' fastening shackle. Secures your ladder quickly and easily.



Rhino Easy Slide
Part# RES
Used for ladders, timber planks and long awkward items. Can be used as a roller replacement. Made from UV stabilised polyethylene.



Eyebolt
Part# REB (1pr)
For hooking your straps in place.



Ratchet Grab
Part# RRG
(Stainless Steel)
2m strap supplied.



Light Mount Bracket
Part# RWLB



Aerial Mount Bracket
Part# RABK



Ratchet Grab
Part# RRG1
Length: 3m
Part# RRG2
Length: 4.5m
Load Rating: 680kg



Cable Lock
Part# RLLB
Attaches to heavy duty bar.



Cable Lock
Part# RLLR
Attaches to ladder rail.



Rhino Multi Purpose Holder
Part# RMPH
Made from UV stabilised polyethylene.