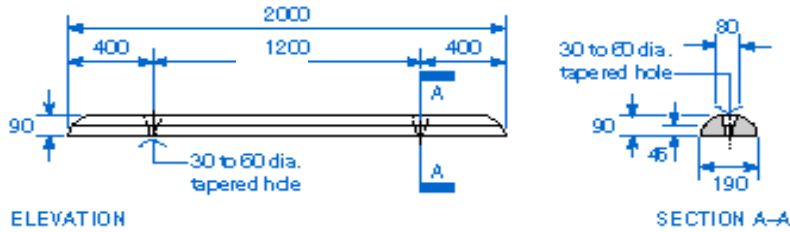


# Wheel Stops - Concrete

## 1650mm Long and 2000mm Long



Australian standards require that car wheel stops be provided wherever it is necessary to limit the travel of a vehicle manoeuvring into a parking space.

Examples where wheel stops should be provided include:

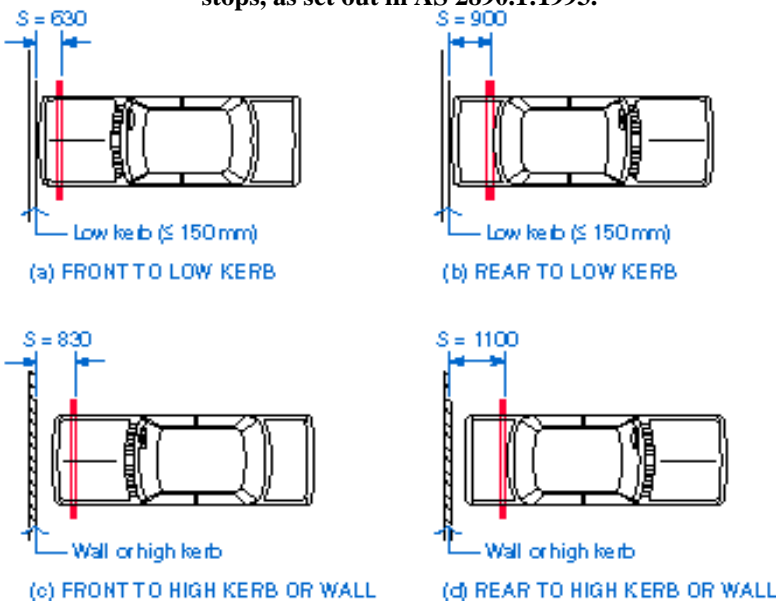
- ▶ To control kerb overhang where this would inconvenience or be hazardous to pedestrians.
- ▶ To prevent contact with buildings or end barriers.
- ▶ Where encroachment into an opposing space in the adjacent parking module is to be restrained.

Wheel stops are made from steel-reinforced smooth, clean finish concrete, **1650mm & 2000 mm long x 90 mm high.**

**Two 30-mm-diameter holes** are provided for fixing. Typically, Y20 dowels or Galvanised bolts (see below), 200mm long, are used to fix the wheel stops to concrete paving and are grouted into place.

Also Can Be Bedded In Compo  
 Additionally - Chemset is Available For Heavy Duty Use

See the diagram below for a guide to correct location of wheel stops, as set out in AS 2890.1:1993.



**NOTES:**

- 1 S = Wheel stop distance, measured to point of contact with vehicle tyre.
- 2 Wheel stop distances are for 90mm high wheel stops.
- 3 Wheel stop distances are set for 885 vehicles. Some kerb overlap may occur with longer vehicles or a rear-parking vehicle when wheel stop set for front-to-kerb parking, '(a)' above.
- 4 Wheel stop distances are set to allow 200mm clearance to the wall for 885 vehicles. The clearance will be almost zero for 899 vehicles.

**SPACEPAC can also install**

- Car-Stops • Parking Barriers • Signage • Symbols and • Line Marking.

Part Number	Descriptions	Shipping Details
# CARSTOP165CM-90H	AS/NZ 2890.1:2004 (latest Standard) 1650Lx190Wx90Hmm Concrete, 58Kg weight - 2 hole - Chamfered edge	Pallet of 20 1650x1200x800mm 1160 kg
# CARSTOP2MTR-90H	AS/NZ 2890.1:1993 2000Lx190Wx90Hmm Concrete, 70Kg weight - 2 hole - Chamfered edge	Pallet of 20 2000x1200x800mm 1400 kg

**Additional / optional**

Part Number	Descriptions	Shipping Details
# B1102200	Compo Mix - 20Kg Bag	-
# B10X200	Bolt M10x200mm Galv	-

**Plus Freight Ex. Sydney Factory**

All prices/specifications subject to change without notice.