

Replaces all previous versions

SPECIAL PURPOSE MATS

There are many uses for mats and there are numerous mats that have been designed for specific purposes. Clean rooms, for instance, need special treatment for the finest particles of dust and dirt prior to entering the area. Pools and showers are wet areas where mats need to drain well but also be soft on bare feet. Supermarkets need extra protection from slip falls in fruit and vegetable areas. There are anti-fatigue mats that need to be resistant to welding sparks, mats that must insulate against electrical shock and many other different, special purposes



Sterile Dust-Free Areas - "Cleanstep" - Grey

- Disposable dirt stopper. Unique layered pad has non-transferring adhesive to remove dust and dirt from shoes and wheels
- As soon as one layer is dirt loaded, tear off and expose a fresh layer
- Total of 60 layers per refill pack.
- Non skid frame holds refill pack.

Part Number	Dimension (Width x Length)	Qty Pk		
# SPMN6032EG-GRY	650 x 800 mm Frame with Refill	1		
# SPMN4030XG-GRY	600 x 750 mm Refill Only	1		

WHERE TO USE

Outside sterile areas - operating theatres, cleanrooms, electronic function or processing areas, entrances from workshop to office area.

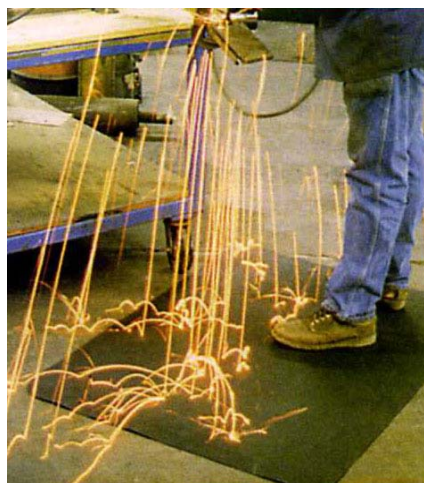


Under-Desk Mats - Chairmats

- Prevents carpet wear from chair castors and feet
- Allow chair to move freely
- Anchors under the mat hold the mat in position without movement
- Bevelled edges for safety
- **3.5mm thickness - Translucent Colour**

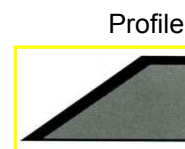
Part Number	Dimension (Width x Length)	Qty Pk		
# SPMA3648WS-CLR	900mm x 1.2m Mat with spikes	1		
# SPMA4553WS-CLR	1.1 x 1.3 m Mat with spikes	1		
# SPMA3648NS-CLR	900mm x 1.2m Mat no spikes	1		
# SPMA4553NS-CLR	1.1 x 1.3 m Mat no spikes	1		

Anchors under the mat hold the mat in position without movement



Welding Mat - Spark Safe

- Repels sparks and hot metal shards
- Excellent anti-fatigue mat thanks to the thick rubber foam base
- Textured rubber top surface improves traction in wet or dry conditions
- **10mm thickness**



WHERE TO USE
 Industrial work and welding areas, metal work grinding, machine shops

Part Number	Dimension (Width x Length)	Qty Pk		
# SPMSP375BK-BLK	900mm x 22.8m Roll	1		
# SPMSP37CBK-BLK	900 mm Wide Cut to length	1		

Please email to spacepac@spacepac.com.au for current pricing

All prices/specifications subject to change without notice.

ADD 10% GST AUSTRALIA ONLY

Replaces all previous versions

SPECIAL PURPOSE MATS

Wet Area Matting - Wayfarer Unbacked, Unedged



- Open-back vinyl loop construction lets dirt and water pass through, mat surface stays clean and dry
- Anti-bacterial agent resists mildew in high moisture areas.
- Easy to clean - shake out or hose off and allow to air dry
- Comfortable cushion surface is ideal of recessed mat
- **8mm thickness**

Part Number	Dimension (Width x Length)	Qty Pk		
# SPMW366U-PWT (Pewter)	900mm x 1.5m Mat	1		
# SPMW366U-BLU (Royal Blue)		1		
# SPMW320U-PWT (Pewter)	900mm x 6.1m Mat	1		
# SPMW320U-BLU (Royal Blue)		1		
# SPMW403U-PWT (Pewter)	900mm x 12.2m Roll	1		
# SPMW403U-BLU (Royal Blue)		1		
# SPMW43UC-PWT (Pewter)	900 mm Wide Cut-to-Length	1		
# SPMW43UC-BLU (Royal Blue)		1		

Profile



WHERE TO USE

Around swimming pools, showers, locker rooms, at baths.

Note:

For Custom Made or Edged mats ask for quote



Fruit & Vegetable Mat - Scraper - Green

- Fortified vinyl loop-pile carpeting bonded to slip-resistant, stain-resistant vinyl base.
- Loop-Textured vinyl carpeting grabs dirt and grit from shoes.
- Comes clean with shake-out or hosing.
- Stops "lettuce creep". Prevents leaf vegetables and berries creeping off the mat, onto floor.
- **8mm thickness**

Part Number	Dimension (Width x Length)	Qty Pk		
# SPMS3660-GRN	900mm x 1.5m Mat	1		

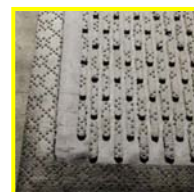
WHERE TO USE

Supermarket fruit and veg displays, produce stores.



Rubber Anti-Slip Safety - SafeStep

- Raised ribs with scraping cleats remove dirt and food droppings from shoes
- Provides sure footing in wet, greasy areas
Made on nitrile rubber - ensures resistance to oil and fat
- Safety bevelled edges
- Easy to wash clean
- **16.5mm thickness**



Part Number	Dimension (Width x Length)	Qty Pk		
# SPMSS366BK-BLK	900m x 1.5m Mat	1		

WHERE TO USE

Commercial Kitchens, Food Processing facilities, even entrances where slip protection in important

Please email to spacepac@spacepac.com.au for current pricing

All prices/specifications subject to change without notice.

ADD 10% GST AUSTRALIA ONLY

Replaces all previous versions

SPECIAL PURPOSE MATS



Non Conductive Insulating Mat - Corrugated Switchboard

- Vinyl matting insulates against electrical shock
- Dielectric Rating 30,000 Volts
- Proof tested 20,00 Volts
- Recommended usage 17,000 Volts
- **6.5mm thickness - Black**

WHERE TO USE

Near fuse boxes, at control panels, in front of switchboards, at high voltage electrical equipment.

Part Number	Dimension (Width x Length)	Qty Pk		
# SPMSR375BK-BLK	900mm x 22.8m Roll	1		
# SPMSR375CBK-BLK	900 mm Wide Cut to length	1		



Static Dissipating Mats - Blue

- Special grounding cord clips to mat and is attached to earth such as earthed office skirting. This allows static electricity built up in the body to discharge harmlessly through the mat and to earth.
- Helps avoid damage to sensitive equipment
- Choice of Comfort King or Diamond Plate ensure excellent anti-fatigue qualities
- Custom Mats: made to size available with cord connection every 3m length.
- **Resistivity - 10⁹ Ohms**

WHERE TO USE

Computers, ATMs, Service counters, electrical industry work areas, registration desk

Part Number	Dimension (Width x Length)	Qty Pk		
# SPPMCS243-BLU	600 x 900 mm	1		
# SPPMCS366-BLU	900mm x 1.5m	1		



Kneeling Mats - Knee-Ease

- High density, closed cell foam relieves pressure on knees
- Portable - Lightweight and has carrying hand grip
- Perfect OH & S accessory. Relieves knee pain & back stress
- Slip resistant underlay controls mat movement
- **15mm thickness**

WHERE TO USE

Electricians, carpet layers, plumbers, gardeners, anyone who kneels

Part Number	Dimension (Width x Length)	Qty Pk		
# SPPMKM3750-BLK	375 x 500mm Frame with Refill	6		



Cord Covers - Black

- Protects electrical leads where they run across carpet.
- It has the additional and very important benefit of preventing trips and stumbles.
- Cord cover consists of a tough flexible vinyl strip with carpet gripping velcro along both sides.

WHERE TO USE

Wherever electrical cord or cable runs across carpet - all offices.

Part Number	Dimension (Width x Length)	Qty Pk		
# SPPMCC01BK-BLK	100mm x 1m	1		
# SPPMCC10BK-BLK	100mm x 10m	1		
# SPPMCC30BK-BLK	100mm x 30m	1		

Please email to spacepac@spacepac.com.au for current pricing

All prices/specifications subject to change without notice.

ADD 10% GST AUSTRALIA ONLY