

Replaces all previous versions

Effective 1st August 2006

# ANTI-FATIGUE MATS - Moulded Foam

## WHY MOULDED FOAM?

Moulded foam mats are made of expanded vinyl foam, giving superb, long life, anti-fatigue qualities. The top surface may have an integral pattern moulded into the foam, designed to enhance slip resistant and reduce wear of the top surface on the foam. Even safety yellow edges may be moulded into some of the products.

## WHERE TO USE:

Warehouse picking areas, laboratories, nurse stations, service desks, mail room, dry assembly line, store greeters.

## E.Z. Step Mats, Rolls and Cut to Length - Grey



Ribbed surface and bevelled edges

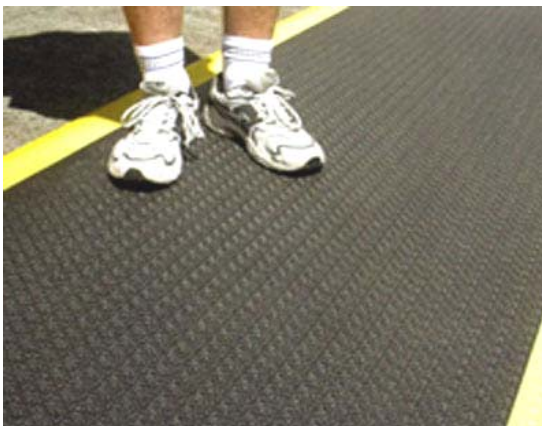
- Fatigue-fighting floor mats and matting made of 100% closed cell vinyl foam.
- Makes long-standing jobs more comfortable and helps increase productivity while providing noise control and protection from cold drafty floors.
- Ribbed surface for surer footing plus bevelled edges to minimize tripping and stumbling.
- Very economical for large areas such as long production lines, warehouse and packing bays.
- **9mm Thickness**

Part Number	Dimension (Width x Length)	Qty Pack		
# SPME1729-GRY	427 x 737mm Mat	6		
# SPME2736-GRY	683 x 914mm Mat	6		
# SPME3600-GRY	900mm x 18.3m Roll	1		
# SPME360C-GRY	900mm Wide Cut to Length **	1		

\*\* Add 2x # SPXDISBS for Bevelled Ends

# SPXDISBS	900 mm Wide Bevelled End	1		
------------	--------------------------	---	--	--

## Pebble Ease Rolls and Cut to Length Black with Yellow Edge



The most Economical Yellow-edge Vinyl foam

- Similar to E-Z Step but with safety in mind as well as foot comfort.
- The safety, anti-skid pebbled surface is enhanced by the 60mm wide bright yellow stripes full length, both sides of the roll.
- This ensures the side edge is clearly seen.
- Relieves foot fatigue and insulates against cold floors in high traffic areas near potential hazards.
- Closed cell vinyl foam for foot comfort and insulation
- **9mm Thickness**

Part Number	Dimension (Width x Length)	Qty Pack		
# SPMEP360YW-BYE	900mm x 18.3m Roll	1		
# SPMEP36CYW-BYE	900mm Wide Cut to Length **	1		

\*\* Add 2x # SPXDISBS for Bevelled Ends

# SPXDISBS	900 mm Wide Bevelled End	1		
------------	--------------------------	---	--	--

Please email to [spacepac@spacepac.com.au](mailto:spacepac@spacepac.com.au) for current pricing

All prices/specifications subject to change without notice.

**ADD 10% GST AUSTRALIA ONLY**

Replaces all previous versions

Effective 1st August 2006

# ANTI-FATIGUE MATS - Moulded Foam



Diamond Pattern surface and bevelled edges

## Diamond Foam Rolls and Cut to Length Black with Yellow Edge

- Fatigue-fighting floor mats and matting made of 100% closed cell vinyl foam.
- Makes long-standing jobs more comfortable and helps increase productivity while providing noise control and protection from cold drafty floors.
- Diamond Pattern surface for surer footing plus bevelled edges to minimize tripping and stumbling.
- Very economical for large areas such as long production lines, warehouse and packing bays.

### • 9mm Thickness

Part Number	Dimension (Width x Length)	Qty Pack		
# SPMED360YW-BYE	900mm x 18.3m Roll	1		
# SPMED36CYW-BYE	900 mm Wide Cut to Length **	1		

### \*\* Add 2x # SPXDISBS for Bevelled Ends

# SPXDISBS	900 mm Wide Bevelled End	1		
------------	--------------------------	---	--	--



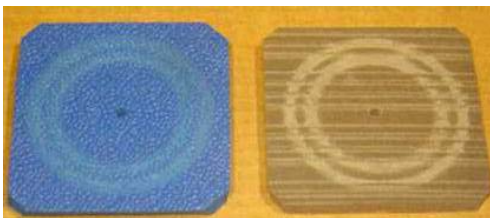
## Comfort King Rolls and Cut to Length - Royal Blue

- Made with patented Zedlan foam with 3 times the resilience of ordinary vinyl foam mats.
- Zedlan minimizes the lactic acid that causes fatigue by encouraging natural muscle flexing.
- Greater softness and resilience reduce strain on feet, ankles, legs and lower back.
- Outperforms other anti-fatigue mats, even in low temperatures.
- Resistant to most common chemicals.
- Extremely durable pebble surface.
- **9mm Thickness**

Part Number	Dimension (Width x Length)	Qty Pack		
# SPMEC360-BLU	900mm x 18.3m Roll	1		
# SPMEC36C-BLU	900 mm Wide Cut to Length **	1		

### \*\* Add 2x # SPXDISBS for Bevelled Ends

# SPXDISBS	900 mm Wide Bevelled End	1		
------------	--------------------------	---	--	--



Comfort king

Ribbed Vinyl

2000 cycles on a Taber Abrader leaves hardly a mark on the comfort king, The ribbed vinyl is seriously damaged in comparison

Please email to [spacepac@spacepac.com.au](mailto:spacepac@spacepac.com.au) for current pricing

All prices/specifications subject to change without notice.

**ADD 10% GST AUSTRALIA ONLY**