

The Strongarm Handwinch & Mast Crane

The Strongarm is a strong, portable, lightweight crane that offers a wide range of application.

Mounted on the back of a Ute or small truck

Set up in a workshop to assist in lifting items up to workbenches

Their application is only limited by the imagination!

This range of crane has a lifting capacity range of 400kg to 500kg, with a 360° slew.

They come with many extras and configurations.



SERIES S4 - 400kg Capacity

One of many features of these cranes is that they are not reliant on Hydraulic or Battery power to operate thus offering unlimited application.

Features :

- Loads up to 400kg.
- 860mm Boom Length.
- 1,500mm Standard Height
- 1,900mm extended height.
- Hinged removable base.
- Stabiliser leg.
- Mechanical slew with worm gear drive for stability on slopes.
- Auto Safety Brake Winch
- Optional additional Base Plate for 2nd vehicle



The slew (rotating) gear and worm wheel are heavy duty to allow for 'out of line' effects if dragging loads into place.

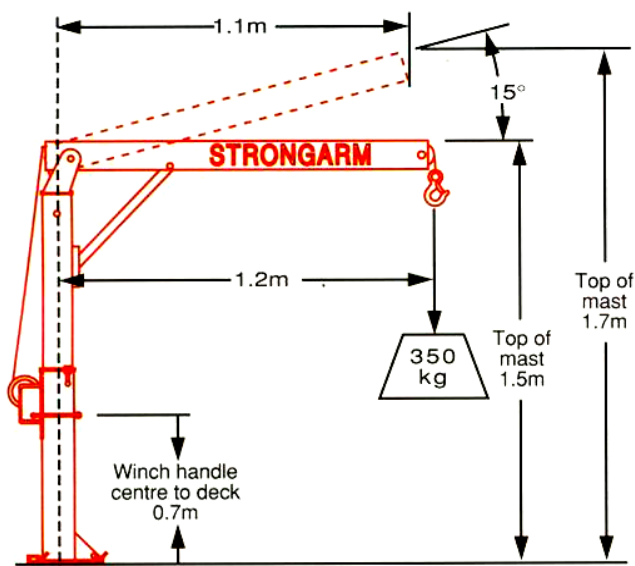


The diagonal stay adds immensely to the strength of the boom.

It is very quick to incline the boom by simply raising the stay into the upper notch.



The mast is fitted to the base plate with 2 pins: remove the first (locking) pin and the mast can be folded down for easy travel. Remove the second (pivot) pin, and the Strongarm can be stowed away or fitted to another vehicle (if that vehicle has been fitted with spare baseplate).



The Boom is NOT extendible on this model.

The Boom can be horizontal or inclined upwards 15°. It has a diagonal stay for greater stability of the boom. It also has a quick lock mast swivel.

| Part Number | Description | |
|-------------|---|--|
| # SP-S4H | Strongarm lifter - handwinch - 400kg Cap Auto Safety Brake Winch. 6 to 1 | |
| # SP-S2BP | Extra Base Plate for 2nd vehicle | |

**Shipping Weight: 67kg ; Carton Size: 350 460 x 1,600mm
 Availability 1 to 2 weeks ... Freight additional - EX Melbourne**

The Strongarm Handwinch & Electric Mast Crane

SERIES S5 - 500kg Capacity

Strong, portable, lightweight crane
Mounted on the back of a Ute or small truck
Set up in a workshop to assist in lifting items up to workbenches
They come with many extras and configurations.

Features:

- Loads up to 500kg.
- 1.000 mm standard boom length
- 1.730 mm extended boom
- 1.545 mm standard height.
- 1.800 mm second position
- 2.100 mm extended height
- Hinged type removable base
- Stabiliser Leg.
- Mechanical slew with worm gear drive for stability on slopes.
- Auto Safety Brake Winch



The slew (rotating) gear and worm wheel are heavy duty to allow for 'out of line' effects if dragging loads into place.

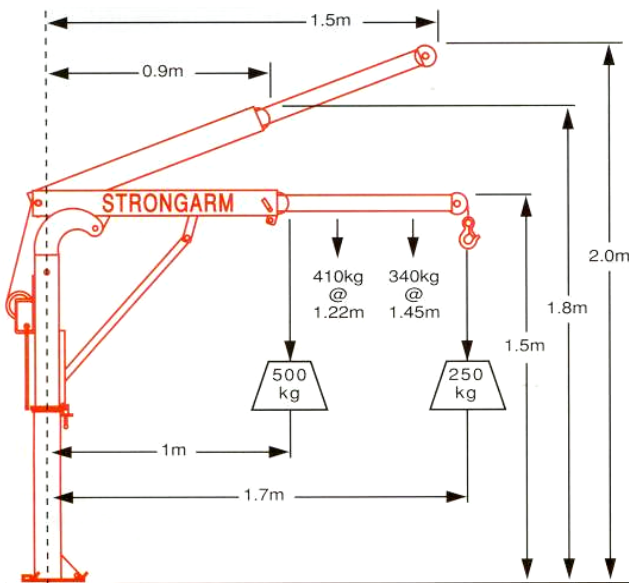


Handwinch Model Illustrated



The mast is fitted to the base plate with 2 pins: remove the first (locking) pin and the mast can be folded down for easy travel.

Remove the second (pivot) pin, and the Strongarm can be stowed away or fitted to another vehicle (if that vehicle has been fitted with another baseplate).



The Boom can be easily extended while unloaded (4 positions), as it runs on rollers.
 The Boom can be horizontal or inclined upwards 22°. It has a diagonal stay for greater stability of the boom.

| Part Number | Description | |
|----------------------|---|--|
| # SP-S5H | Strongarm lifter - HANDWINCH 500kg Cap Auto Safety Brake Winch. 10 to 1 | |
| # SP-S5E | Strongarm lifter - ELECTRIC 500kg Cap, With Strongarm Electric winch model SA5000 | |
| Extras for Series S5 | | |
| # SP-SRM | Remote Control - 2 metre cable | |
| # SP-S2BP | Extra Base Plate for 2nd vehicle | |
| # SP-SL | Stabiliser Leg (Spare) | |

Shipping Weight: 78kg ; Carton Size: 350 460 x 1,600mm
Availability 1 to 2 weeks
Freight additional - EX Melbourne

All prices/specifications subject to change without notice.