

Tripod & Floor Standing Screens

Picture King Heavy Duty Tripod Screens	Page	2
Versatol Tripod Screens	Page	2
Gilkon Tripod Screens	Page	3
Tripod Accessories	Page	3
Model C Floor Standing Screens	Page	3
Insta-Theatre Deluxe Screens	Page	4
Theatre-Lite Floor Standing Screens	Page	4

Manual Wall & Ceiling Mounted Screens

Model C Extra Heavy Duty Screens	Page	5
Model B Manual Wall / Ceiling Screens	Page	6
Model B High Contrast with CSR Screens	Page	6
Model B Deluxe with Tensioning Arm Screens	Page	7
Gilkon Class-Rite & Scholar Manual Screens	Page	7
Manual Screen Accessories	Page	7

Fixed Frame Wall Screens

Silhouette Snap Frame Screens - Matte White Surface	Page	8
Cinema Contour Snap Frame Screens - High Contrast Surface	Page	9
Cinema Contour Frame Screens - Da-Lite Audio Vision Surface	Page	10
Silhouette Snap Frame Screens - Rear Projection	Page	11

Electric Projection Screens

Cosmopolitan Electrol Screens	Page	12
Cosmopolitan Electrol High Contrast Screens	Page	13
Cosmopolitan Electrol Tensioned Screens	Page	13
Slimline Electrol Screens	Page	14
Boardroom Electrol Concealed Screens	Page	14
Designer Contour Electrol Screens	Page	14
Contour Electrol Screens	Page	15
Gilkon Vantage Motorised Screens	Page	15
Remote Control Options	Page	15

Fast-Fold Portable Screens

Fast-Fold Deluxe Professional Screens	Page	16
Fast-Fold Truss Screens	Page	17
Fast-Fold Truss Deluxe Screens	Page	17
Drape Kits	Page	17
Drape Kit Hardware	Page	18
Pipe & Drape Background System	Page	18

Integrated Screen Control

Serial Control Board	Page	19
Nett 100 Ethernet-Serial Adaptor	Page	19
Low Voltage Control	Page	19

Rear Projection Rigid Surface Screens

Da-Plex In-wall Rear Projection	Page	20
---------------------------------	------	----

Projection Screen Surfaces

Selecting the Right Surface	Page	21
Front Projection Surfaces	Page	22-23

Picture King Heavy Duty Tripod Screens



High quality professional Tripod screens standard with borders and keystone eliminator. Heavy duty fibreglass backed screen material. Patented Leg Lock/ Release. Fabric is secured by built-in lock to prevent shifting in transport.

Size mm	Surface	Code
Square Format		
1780 x 1780	Matte White	4DAL 40131
2130 x 2130	Matte White	4DAL 40141
2440 x 2440	Matte White	4DAL 40151
1780 x 1780	Silver Matte	4DAL 90601
Video Format		
1270 x 1700		
84" Diag	Matte White	4DAL 76026
1520 x 2030		
100" Diag	Matte White	4DAL 40138
1750 x 2340		
120" Diag	Matte White	4DAL 40149
Extra Heavy Duty Carpeted - Designed for Rental Use		
1780 x 1780	Matte White	4 DAL 69899
2130 x 2130	Matte White	4DAL 69901
2440 x 2440	Matte White	4DAL 69905

For larger floor standing screen see Page 5 "Floor Model C"

Versatol® Tripod Screens



Durable screen. High-Low case adjustment allows a 1780 mm screen to be fully opened in a room with 2.4 mtr ceiling.

Size mm	Surface	Code
1270 x 1270	Matte White	4DAL 72261
1520 x 1520	Matte White	4DAL 72262
1780 x 1780	Matte White	4DAL 72263

Refer to pages 21-23 for Da-Lite surface specifications.

Gilkon Tripod Screens



A high quality, low cost tripod screen. Ideal for education usage where durability at a modest cost is important.

Size mm	Surface	Code
1270 x 1270	Matte White	4DAL 83387
1520 x 1520	Matte White	4DAL 83388
1780 x 1780	Matte White	4DAL 83389

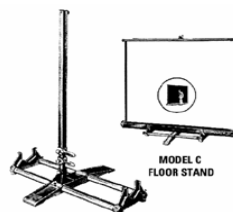
Tripod Accessories

Size mm	Surface	Code
1270	Padded Carry Case	4DAL 40940
1520	Padded Carry Case	4DAL 40941
1780	Padded Carry Case	4DAL 40942
2130	Padded Carry Case	4DAL 40943
2440	Padded Carry Case	4DAL 40944

Model C™ Floor Standing

Screen pulls up from case. Ideal for rental, stage and hospitality

Size mm	Surface	Code
Floor Stand required with screens shown below		
Floor Stand		4DAL 40959
2440 x 2440	Matte White	4DAL 40253
2740 x 2740	Matte White	4DAL 40263
3050 x 3050	Matte White	4DAL 40274
3660 x 3660	Matte White	4DAL 40285



Refer to pages 21-23 for Da-Lite surface specifications.

Insta-Theatre Deluxe Screens



Portable screen that sets up in seconds. Lightweight and self standing, goes anywhere.

Size mm	Surface	Code
Video Format 4:3		
910 x 1220		
60" Diag	Wide Power	4DAL 83315
1220 x 1625		
80" Diag	Wide Power	4DAL 83316
1520 x 2030		
100" Diag	Wide Power	4DAL 87063
HDTV Format 16:9		
910 x 1625		
73" Diag	Wide Power	4DAL 93982
1115 x 1980		
90" Diag	Wide Power	4DAL 93983



Theatre-Lite Floor Standing



All the benefits of a light weight, self standing style screen, at a low cost. A retracting post provides varying viewing heights.

Size mm	Surface	Code
750 x 1330		
60" Diag	Wide Power	4DAL 94128
990 x 1780		
80" Diag	Wide Power	4DAL 94129



Ease of set-up makes the Theatre-Lite an ideal choice for a portable home theatre.



Extension arm features four height settings to perfectly match your application.

Refer to pages 21-23 for Da-Lite surface specifications.

Model C™ Extra Heavy Duty



Permanently lubricated steel ball bearings combined with nylon brushings and heavy duty spring assembly. Smooth operation even in high usage. Fabrics are seamless for improved viewing (Excluding 3660 x 3660). Internal roller is 80 mm diameter for enhanced lay flat over wide screen span.

Size mm	Surface	Code
Square Format		
2440x 2440	Matte White	4DAL 40252
2740 x 2740	Matte White	4DAL 40262
3050 x 3050	Matte White	4DAL 40273
3660 x 3660	Matte White	4DAL 40284
Video Format		
1750 x 2340		
120" Diag	Matte White	4DAL 40239
1980 x 2640		
130" Diag	Matte White	4DAL 40257
2210 x 2950		
150" Diag	Matte White	4DAL 77169
2670 x 3560		
180" Diag	Matte White	4DAL 77290
HDTV 16:9 Format		
1315 x 2340		
106" Diag	Matte White	4DAL 40239H
1485 x 2640		
119" Diag	Matte White	4DAL 40257H
1660 x 2950		
133" Diag	Matte White	4DAL 77169H
2000 x 3560		
159" Diag	Matte White	4DAL 77290H

Refer to pages 21-23 for Da-Lite surface specifications.

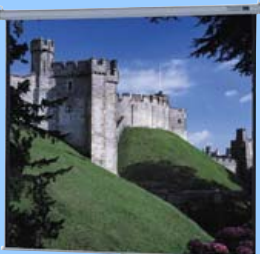
Model B® Manual Wall / Ceiling



General purpose screen. Case design allows flush mounting to ceiling or wall. Easy pull down system locks at intervals to suit projected image.

Size mm	Surface	Code
Square Format		
1270 x 1270	Matte White	4DAL 40180
1520 x 1520	Matte White	4DAL 40184
1780 x 1780	Matte White	4DAL 40188
2130 x 2130	Matte White	4DAL 40197
2440 x 2440	Matte White	4DAL 40208
Video Format		
1270 x 1700		
84" Diag	Matte White	4DAL 74647
1520 x 2030		
100" Diag	Matte White	4DAL 40194
1750 x 2340		
120" Diag	Matte White	4DAL 74653
HDTV 16:9 Format		
955 x 1700		
77" Diag	Matte White	4DAL 74647H
1140 x 2030		
92" Diag	Matte White	4DAL 40194H
1315 x 2340		
105" Diag	Matte White	4DAL 74653H

Model B® High Contrast with CSR



Model B Controlled Screen Return is an exclusive Da-Lite feature which allows a quiet, gentle return of the screen into the case. Supplied with a "Da-Lite High Contrast" surface for improved picture quality.

Size mm	Surface	Code
Video Format		
1270 x 1700		
84" Diag	High Contrast	4DAL 92918
1520 x 2030		
100" Diag	High Contrast	4DAL 92836
HDTV 16:9 Format		
955 x 1700		
77" Diag	High Contrast	4DAL 92918H
1140 x 2030		
92" Diag	High Contrast	4DAL 92836H

Refer to pages 21-23 for Da-Lite surface specifications.

Deluxe Model B® with Tensioning Arm



Tensioned manual wall or ceiling screen. Built-in tensioning arm locks in place to provide a very flat viewing surface. Screen surface can be angled when installed with extension brackets.

Size mm	Surface	Code
Video Format		
1090 x 1450	High Contrast	4DAL 92737
72" Diag	Matte White	4DAL 74696
1270 x 1700	High Contrast	4DAL 92738
84" Diag	Matte White	4DAL 74697
1520 x 2030	High Contrast	4DAL 92740
100" Diag	Matte White	4DAL 74698
HDTV Format		
1140 x 2030	High Contrast	4DAL 92743
92" Diag	Matte White	4DAL 92057
1315 x 2340	High Contrast	4DAL 95526
106" Diag	Matte White	4DAL 95525
Square Format		
1520 x 1520	Matte White	4DAL 40223
1780 x 1780	Matte White	4DAL 40230



Class-Rite & Scholar Manual Screens



Designed to withstand the demands of education usage, these qualities are also attractive for business and government applications.

Size mm	Surface	Code
Gilkon Class-Rite		
1270 x 1270	Matte White	4DAL 83384
1520 x 1520	Matte White	4DAL 83385
1780 x 1780	Matte White	4DAL 83386
Gilkon Scholar - Square Format		
2140 x 2140	Matte White	5HLW 2140
2440 x 2440	Matte White	5HLW 2440
Gilkon Scholar - Video Format		
1520 x 2030		
100" Diag	Matte White	5HW 100
1750 x 2340		
120" Diag	Matte White	5HW 120

Other sizes and customising available

Manual Screen Accessories



T Bar Scissor Clip

Description	Surface	Code
#6 Wall Bracket 150 mm ext'n		4DAL 40932
#11 Wall Bracket 355 mm ext'n		4DAL 40957
T Bar Scissor Clips/Ceiling Mount		4DAL 78445
Tilt Lock, Magnetic		4DAL 40965
Gilkon Pull Down Screen Rod		5PDROD

Silhouette Snap Frame Screens - Matte White Surface



Provides a perfectly flat viewing surface. Ideal for video applications. Fixed wide frame screen with concealed fixing. Surface simply snaps on the rear of a sleek frame.



Front View

Size mm	Surface	Code
---------	---------	------

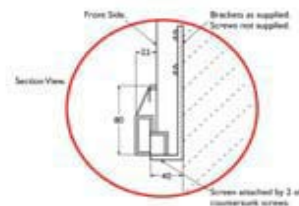
Video 4 : 3 Format

1110 x 1465		
72" Diag	Matte White	5SSVF72
1280 x 1705		
84" Diag	Matte White	5SSVF84
1460 x 1950		
96" Diag	Matte White	5SSVF96
1525 x 2035		
100" Diag	Matte White	5SSVF100
1755 x 2340		
115" Diag	Matte White	5SSVF115
1830 x 2440		
120" Diag	Matte White	5SSVF120
1980 x 2640		
130" Diag	Matte White	5SSVF130
2285 x 3050		
150" Diag	Matte White	5SSVF150
2745 x 3660		
180" Diag	Matte White	5SSVF180

HDTV 16 : 9 Format

1045 x 1860		
84" Diag	Matte White	5SSHD84
1120 x 1990		
90" Diag	Matte White	5SSHD90
1180 x 2105		
95" Diag	Matte White	5SSHD95
1245 x 2215		
100" Diag	Matte White	5SSHD100
1430 x 2545		
115" Diag	Matte White	5SSHD115
1555 x 2770		
125" Diag	Matte White	5SSHD125
1615 x 2880		
130" Diag	Matte White	5SSHD130
1680 x 2990		
135" Diag	Matte White	5SSHD135
1740 x 3100		
140" Diag	Matte White	5SSHD140

Overall dimensions = NPA = 160 mm



Refer to pages 21-23 for Da-Lite surface specifications.

Cinema Contour Frame Screens - High Contrast Surface



Provides a perfectly flat viewing surface. Fixed wide frame screen with concealed fixing. Surface simply snaps on the rear of the sleek frame. High Contrast MW Material has a slightly grey appearance, rejecting ambient light and producing higher contrast. Ideal in home theatre applications where a premium video image is desired.

Front View



Size mm	Surface	Code
Video 4 : 3 Format		
1110 x 1465		
72" Diag	High Contrast	4DAL 90261
1280 x 1705		
84" Diag	High Contrast	4DAL 90262
1460 x 1950		
96" Diag	High Contrast	4DAL 90263
1525 x 2035		
100" Diag	High Contrast	4DAL 90264
1830 x 2440		
120" Diag	High Contrast	4DAL 90265
2285 x 3050		
150" Diag	High Contrast	4DAL 90266
2745 x 3660		
180" Diag	High Contrast	4DAL 90267
HDTV 16 : 9 Format		
952 x 1700		
77" Diag	High Contrast	4DAL 92978
1140 x 2030		
92" Diag	High Contrast	4DAL 90270
1245 x 2210		
100" Diag	High Contrast	4DAL 95571
1315 x 2340		
106" Diag	High Contrast	4DAL 90271
1370 x 2440		
110" Diag	High Contrast	4DAL 94313
1475 x 2640		
119" Diag	High Contrast	4DAL 90272
1650 x 2945		
133" Diag	High Contrast	4DAL 90273

Overall dimensions = NPA = 160 mm

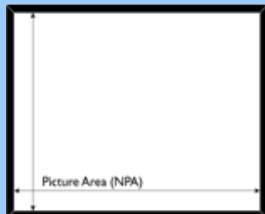
Refer to pages 21-23 for Da-Lite surface specifications.

Cinema Contour Frame Screens - Da-Lite Audio Vision



Provides a perfectly flat viewing surface. Ideal in video applications. Fixed wide frame screen with concealed fixing. Surface simply snaps on the rear of the sleek frame.

Front View



Size mm	Surface	Code
---------	---------	------

Video 4 : 3 Format

1110 x 1465		
72" Diag	Audio Vision	4DAL 87101
1280 x 1705		
84" Diag	Audio Vision	4DAL 87108
1460 x 1950		
96" Diag	Audio Vision	4DAL 87115
1525 x 2035		
100" Diag	Audio Vision	4DAL 87122
1755 x 2340		
115" Diag	Audio Vision	4DAL 87129

HDTV 16 : 9 Format

1045 x 1860		
84" Diag	Audio Vision	4DAL 92982
1180 x 2105		
95" Diag	Audio Vision	4DAL 87156
1245 x 2215		
100" Diag	Audio Vision	4DAL 95575
1430 x 2545		
115" Diag	Audio Vision	4DAL 87163
1555 x 2770		
125" Diag	Audio Vision	4DAL 94315
1615 x 2880		
130" Diag	Audio Vision	4DAL 87170
1680 x 2990		
135" Diag	Audio Vision	4DAL 87177

Overall dimensions = NPA = 160 mm

Refer to pages 21-23 for Da-Lite surface specifications.

Silhouette Snap Frame Screens - Rear Projection



Provides a perfectly flat viewing surface. Ideal in video applications. Fixed wide frame screen with concealed fixing. Surface simply snaps on the rear of the sleek frame.



Front View

Size mm	Surface	Code
---------	---------	------

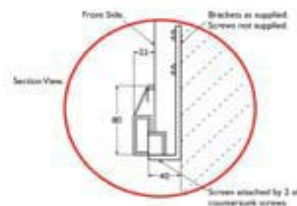
Video 4 : 3 Format

1110 x 1465		
72" Diag	Rear Projection	5SSVR72
1280 x 1705		
84" Diag	Rear Projection	5SSVR84
1460 x 1950		
96" Diag	Rear Projection	5SSVR96
1525 x 2035		
100" Diag	Rear Projection	5SSVR100
1755 x 2340		
115" Diag	Rear Projection	5SSVR115
1830 x 2440		
120" Diag	Rear Projection	5SSVR120
1980 x 2640		
130" Diag	Rear Projection	5SSVR130
2285 x 3050		
150" Diag	Rear Projection	5SSVR150
2745 x 3660		
180" Diag	Rear Projection	5SSVR180

HDTV 16 : 9 Format

1045 x 1860		
84" Diag	Rear Projection	5SSHDR84
1120 x 1990		
90" Diag	Rear Projection	5SSHDR90
1180 x 2105		
95" Diag	Rear Projection	5SSHDR95
1245 x 2215		
100" Diag	Rear Projection	5SSHDR100
1430 x 2545		
115" Diag	Rear Projection	5SSHDR115
1555 x 2770		
125" Diag	Rear Projection	5SSHDR125
1615 x 2880		
130" Diag	Rear Projection	5SSHDR130
1680 x 2990		
135" Diag	Rear Projection	5SSHDR135
1740 x 3100		
140" Diag	Rear Projection	5SSHDR140

Overall dimensions = NPA = 160 mm



Refer to pages 21-23 for Da-Lite surface specifications.

Cosmopolitan® Electrol®



Wall or ceiling mounted electric screen. Patented "In-The-Roller" motor for quiet operation. White textured case blends with most décor. Ideal where a recessed installation is not suited.



Optional floating mounting bracket.

Refer to pages 21-23 for Da-Lite surface specifications.

Size mm	Surface	Code
Square Format		
1520 x 1520	Matte White	4DAL 40775
1780 x 1780	Matte White	4DAL 40780
2130 x 2130	Matte White	4DAL 40786
2440 x 2440	Matte White	4DAL 40801
2740 x 2740	Matte White	4DAL 40807
3050 x 3050	Matte White	4DAL 40814
3660 x 3660	Matte White	4DAL 40823
Video Format 4 : 3		
1270 x 1700		
84" Diag	Matte White	4DAL 74659
1520 x 2030		
100" Diag	Matte White	4DAL 40782
1750 x 2340		
120" Diag	Matte White	4DAL 40789
1980 x 2640		
130" Diag	Matte White	4DAL 40804
2210 x 2950		
150" Diag	Matte White	4DAL 76738
2670 x 3560		
180" Diag	Matte White	4DAL 76740
3050 x 4065		
200" Diag	Matte White	4DAL 83238
HDTV 16 : 9 Format		
955 x 1700		
77" Diag	Matte White	4DAL 74659H
1140 x 2030		
92" Diag	Matte White	4DAL 40782H
1315 x 2340		
106" Diag	Matte White	4DAL 40789H
1485 x 2640		
119" Diag	Matte White	4DAL 40804H
1660 x 2950		
133" Diag	Matte White	4DAL 76738H
2000 x 3560		
160" Diag	Matte White	4DAL 76740H

Cosmopolitan Option -

Floating mounting bracket system 4DAL 77027

Above dimensions are NPA (Net Picture Area). Masking Borders are 50 mm on sides.

Refer to Page 15 for Remote Controls.

Cosmopolitan® Electrol® High Contrast



High Contrast MW material has a slightly grey appearance, rejecting ambient light and producing higher contrast. Ideal for home theatre applications where premium video image is desired.

Size mm	Surface	Code
Video Format 4 : 3		
1520 x 2030		
100" Diag	High Contrast	4DAL 92575
1750 x 2340		
120" Diag	High Contrast	4DAL 92576
HDTV 16 : 9 Format		
1140 x 2030		
92" Diag	High Contrast	4DAL 92575H
1315 x 2340		
106" Diag	High Contrast	4DAL 92576H

Cosmopolitan® Electrol® Tensioned



High quality motorised screen with TabGuide tensioning. The guide system maintains even lateral tension, and the custom slat bar maintains vertical tension. The benefit is an extra flat surface that can be automatically retracted. Available with specialist screen materials, HC Cinemavision, Audiovision etc.

Size mm	Surface	Code
Video Format 4 : 3		
1520 x 2030		
100" Diag	Da-Mat	4DAL 76015
1750 x 2340		
120" Diag	DA-Mat	4DAL 76016
HDTV 16 : 9 Format		
1520 x 2030		
92" Diag	Da-Mat	4DAL 83448
1315 x 2340		
106" Diag	Da-Mat	4DAL 79024
Video Format 4 : 3		
1520 x 2030		
100" Diag	HC Cinemavision	4DAL 89899
1750 x 2340		
120" Diag	HC Cinemavision	4DAL 89900
HDTV 16 : 9 Format		
1520 x 2030		
92" Diag	HC Cinemavision	4DAL 89904
1315 x 2340		
106" Diag	HC Cinemavision	4DAL 89907
Video Format 4 : 3		
1520 x 2030		
100" Diag	Audiovision	4DAL 83539
1750 x 2340		
120" Diag	Audiovision	4DAL 83540
HDTV 16 : 9 Format		
1520 x 2030		
92" Diag	Audiovision	4DAL 83541
1315 x 2340		
106" Diag	Audiovision	4DAL 83542

Other sizes and formats available Refer to Page 15 for Remote Controls

Refer to pages 21-23 for Da-Lite surface specifications.

Slimline Electrol®



Very compact case allows the screen to be unobtrusively placed anywhere in a room, ceiling or wall mounted. In-line pre wired switch is included.

Size mm	Surface	Code
Video Format 4 : 3		
1270 x 1700		
84" Diag	Matte White	4DAL 76757
1520 x 2030		
100" Diag	Matte White	4DAL 72606
HDTV 16 : 9 Format		
955 x 1700		
77" Diag	Matte White	4DAL 76757H
1140 x 2030		
92" Diag	Matte White	4DAL 72606H

Boardroom Electrol® Concealed



Concealed in the ceiling, electric screen. Fully automatic ceiling closure doors conceal the screen when not in use. Suited to conference and boardrooms.

Size mm	Surface	Code
1780 x 1780	Matte White	4DAL 40723
2130 x 2130	Matte White	4DAL 40728
2440 x 2440	Matte White	4DAL 40738
2740 x 2740	Matte White	4DAL 40744
3050 x 3050	Matte White	4DAL 40750
3660 x 3660	Matte White	4DAL 40758

Designer Contour Electrol®



New to the Da-Lite range. Elegant curved aluminum case. Screen retracts completely into case for a clean, modern appearance. Optional control interface can be factory installed. **Designer Contour is a slim case version.**

Size mm	Surface	Code
Video Format 4 : 3		
1090 x 1450		
72" Diag	Matte White	4DAL 89734
1270 x 1700		
84" Diag	Matte White	4DAL 89738
1450 x 1960		
96" Diag	Matte White	4DAL 89742
1520 x 2030		
100" Diag	Matte White	4DAL 89746
1750 x 2340		
120" Diag	Matte White	4DAL 89750

Refer to Page 15 for Remote Controls.

Contour Electrol®



New to the Da-Lite range. Elegant curved aluminum case. Screen retracts completely into case for a clean, modern appearance. Optional control interface can be factory installed.

Size mm	Surface	Code
Video Format 4 : 3		
1270 x 1700		
84" Diag	Matte White	4DAL 88360
1520 x 2030		
100" Diag	Matte White	4DAL 88368
1750 x 2340		
120" Diag	Matte White	4DAL 88372
1980 x 2640		
130" Diag	Matte White	4DAL 88337
2210 x 2950		
150" Diag	Matte White	4DAL 88376
2670 x 3560		
180" Diag	Matte White	4DAL 88380

16 : 9 Format available



Vantage Motorised Screens



Ultra quiet motor. Masking borders improve contrast. Manufactured in Australia.

Size mm	Surface	Code
1520 x 1520	Matte White	5MW1520
1830 x 1830	Matte White	5MW1830
2140 x 2140	Matte White	5MW2140
2440 x 2440	Matte White	5MW2440
Video Format 4 : 3		
1520 x 2030		
100" Diag	Matte White	5MW 100
1750 x 2340		
120" Diag	Matte White	5MW 120
HDTV 16 : 9 Format		
1140 x 2030		
92" Diag	Matte White	5MW92H
1315 x 2340		
106" Diag	Matte White	5MW106H

Other sizes and customising available

Remote Control Options

Size mm	Surface	Code
Infrared Remote Control Kit		5 REMOTEIR
Somfy CD - Low Volt Interface		5 CD 4
Radio Frequency Remote Kit		5 REMOTERF

Refer to pages 21-23 for Da-Lite surface specifications.

Fast-Fold Deluxe Professional Screens



Fast-Fold screens are made to take the rigors of constant set-up and tear-down, yet retain their good appearance and performance for years. Single sturdy frame with easy release catches. Front projection surface. Carry case with wheels. Set up easily without tools for the ultimate in convenience.



Size mm	Surface	Code
---------	---------	------

Front Projection 4 : 3 Format

1830 x 2440	Da-Mat	4DAL 88612
2290 x 3050	Da-Mat	4DAL 88617
2740 x 3660	Da-Mat	4DAL 88619

Rear Projection 4 : 3 Format

1830 x 2440	Da-TEX	4DAL 88633
2290 x 3050	Da-TEX	4DAL 88638
2740 x 3660	Da-TEX	4DAL 88640



Replacement Surface - Da-Mat Front Projection

1830 x 2440	Da-Mat	4DAL 41517
2290 x 3050	Da-Mat	4DAL 41529
2740 x 3660	Da-Mat	4DAL 41542

Replacement Surface - Da-TEX Rear Projection

1830 x 2440	Da-TEX	4DAL 90812
2290 x 3050	Da-TEX	4DAL 90817
2740 x 3660	Da-TEX	4DAL 90819

Heavy Duty A/T Legs

To be added for stability when drapes used 4DAL 89035

Fast-Fold Truss Screens

The rental industry standard. Fast-Fold Truss frame and legs are constructed of dual aluminium tube. Surfaces are interchangeable with Fast-Fold Truss Deluxe. Kit includes frame, legs and anti-sway braces, projection surface, speed cranks and case.

Size mm	Surface	Code
---------	---------	------

1830 x 2440	Da-Mat	4DAL 84812
2290 x 3050	Da-Mat	4DAL 84813
2740 x 3660	Da-Mat	4DAL 84815
3660 x 4880	Da-Mat	4DAL 40517

Replacement Surface - Da-TEX Rear Projection - Truss

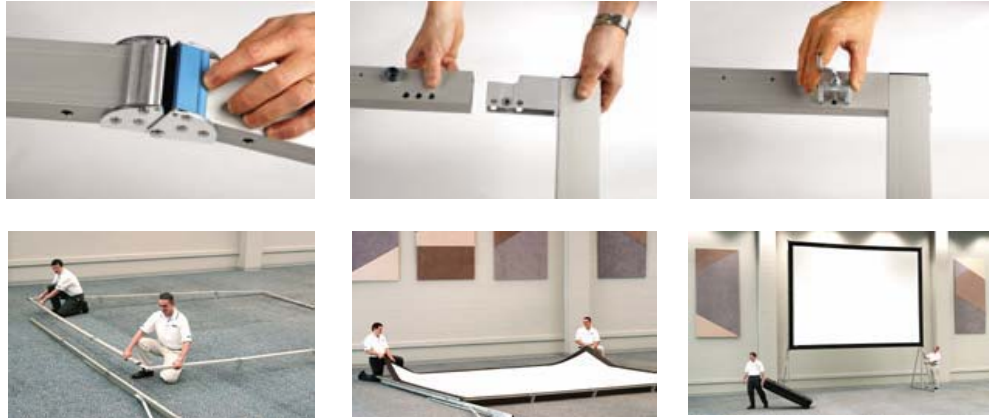
1830 x 2440	Da-TEX	4DAL 84830
2290 x 3050	Da-TEX	4DAL 84831
2740 x 3660	Da-TEX	4DAL 84833
3660 x 4880	Da-TEX	4DAL 41604

Refer to pages 21-23 for Da-Lite surface specifications.

Fast-Fold Truss Deluxe Screens

Da-Lite's newest addition to the rental and staging products range. Fast-Fold Truss Deluxe frame and legs are constructed from a sturdy yet lightweight 65x30mm aluminium tube. A feature is easy release snap latches for simple and quick set up and tear-down. Surfaces are interchangeable with Fast-Fold Truss. Kit includes frame, legs and anti sway braces with your selected projection surface. Speedy cranks and case.

Size mm	Surface	Code
1830 x 2440	Da-Mat	4DAL 92087
2290 x 3050	Da-Mat	4DAL 92088
2740 x 3660	Da-Mat	4DAL 92090
3660 x 4880	Da-Mat	4DAL 92097



Drape Kits



Drape Kit complete - includes hardware, wing bars, top valance and adjustable skirt bar.

Size mm	Code
Drape Kit - Fast-Fold Deluxe	
1830 x 2440	4DKH 6X8
2290 x 3050	4DKH 7X10
2740 x 3660	4DKH 9X12
Drape Kit - Fast-Fold Truss	
1830 x 2440	4DKHT 6X8
2290 x 3050	4DKHT 7X10
2740 x 3660	4DKHT 9X12
3660 x 4880	4DKHT 12X16

Refer to pages 21-23 for Da-Lite surface specifications.

Drape Kit Hardware

Size mm	Code
Drape Kit Hardware - Fast-Fold Deluxe - Frame Wing Bars (pair)	
1830 x 2440	4DAL 89212
2290 x 3050	4DAL 89217
2740 x 3660	4DAL 89219
Drape Kit Hardware - Fast-Fold Deluxe - Frame Valance Bar	
1830 x 2440	4DAL 89233
2290 x 3050	4DAL 89238
2740 x 3660	4DAL 89240
Drape Kit Hardware - Fast-Fold Deluxe - Adjustable Skirt Bar	
1830 x 2440	4DAL 89254
2290 x 3050	4DAL 89259
2740 x 3660	4DAL 89261
Drape Kit Hardware - Fast-Fold Truss - Frame Wing Bars (pair)	
1830 x 2440	4DAL 82170
2290 x 3050	4DAL 81011
2740 x 3660	4DAL 81015
3660 x 4880	4DAL 41030
Drape Kit Hardware - Fast-Fold Truss - Frame Valance Bar	
1830 x 2440	4DAL 82172
2290 x 3050	4DAL 81001
2740 x 3660	4DAL 81005
3660 x 4880	4DAL 41058
Drape Kit Hardware - Fast-Fold Truss - Adjustable Skirt Bar	
1830 x 2440	4DAL 82174
2290 x 3050	4DAL 81006
2740 x 3660	4DAL 81010
3660 x 4880	4DAL 41085

Pipe & Drape Background System

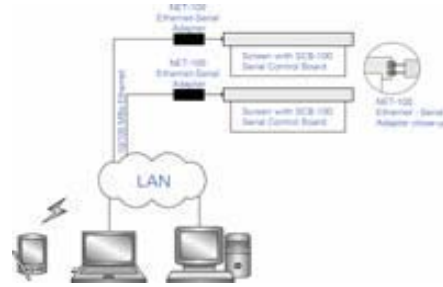


Description	Extension Range	Code
Telescopic Upright	2740 x 4880	4DAL 69604
Telescopic Crossbar	2130 x 3660	4DAL 69608
Base Plate & Spigot		5SBP 600

Integrated Screen Control



Da-Lite introduces Integrated Screen Control (ISC), a revolutionary new control solution. Using a multitude of industry firsts, this series demonstrates Da-Lite's Commitment to innovation. ISC includes the first integrated dual RS-232 control / relay control, smallest Ethernet adaptor in the professional AV market, first standards-based asset management solution for projector screens.



Serial Control Board - SCB-100

The Serial Control Board Allows for control of a screen using RS-232 Communication and/or relay closures. One SCB controls one projection screen or projector lift. Supplies as a retro fit enclosure or factory fitted with **Da-Lite Contour** and **Da-Lite Advantage** series screens.



Nett-100 Ethernet-Serial Adaptor

The Ethernet-Serial Adaptor allows any SCB-100 enabled screen to be controlled over a local-area network or wide-area network. Using standard TCP/IP protocol and a 10Base-T connection, the NET-100 can be easily integrated into almost any existing local area network. With a built-in web server, a screen may be accessed from any web browser software, such as Microsoft Internet Explorer, for control and status information.

Low Voltage Control

Da-Lite can also provide a low voltage switching option, factory fitted to **Da-Lite Contour** and **Da-Lite Advantage** series screens. Cost is added to applicable product.

Description

Code

SCB-100 Serial Control Board	4DAL CSB 100
NET-100 Serial Control Board	4DAL NET 100
Low Voltage Switch Option	4DAL LV



39 Ellen St. Wollongong NSW 2500, AUSTRALIA
Phone: +61 2 4227 3444 - Fax: +61 2 4226 2208
spacepac@spacepac.com.au

Da-Plex In-wall Rear Projection

View Area mm	Thickness mm	Code
1090 x 1450 72" Diag	6.5	4DAL 27508
1270 x 1700 84" Diag	6.5	4DAL 27509
1520 x 2030 100" Diag	10	4DAL 27511
1750 x 2340 120" Diag	10	4DAL 27512
2210 x 2950 150" Diag	10	4DAL 27513

Selecting the Right Screen

Four Steps to Selecting the Right Screen

1. Pick the **screen type** that best suits your particular needs. For example, choose from front projection or rear projection screens in either portable, wall or ceiling mounted models in either manual or electric versions. Generally, if your projection application is permanent, then wall or ceiling screens are your best choice. If, however, you find your needs require moving the screen to different locations, then a portable screen is a better alternative.

2. Determine the optimum screen **size based** on room dimensions, planned audience seating size and arrangement. The rule of thumb is to fit the screen to the audience - not to the projector. Da-Lite recommends the following formula for determining screen size:

- Screen height should be approximately equal to 1/6 the distance from the screen to the last row of seats, allowing text to be read and detail to be seen in the projected image.
- Ideally, the first row of seats should be approximately 2 screen heights away.
- The bottom of the screen should be a minimum of 1.2 metres (4 feet) above the audience floor, allowing those seated toward the rear of the audience to see the screen. This may require additional screen "drop" for ceiling hung screens.

3. Select the appropriate **format** for your projection application. Common formats are as follows:

Common Application	Aspect ratio Width/Height
NTSC Video	1.33
PAL Video	1.33
HDTV Video	1.78
Letterbox Video	1.85
35 mm Filmstrip	1.32
2x2 Standard 25 mm	
Double-Frame Slides	1.5
SXGA Super XGA Computer	1.25
Cinemascope	2.35

4. Choose the **screen surface** that best suits your projection and viewing requirements. For your convenience, the next four pages provide description and performance characteristics for each front and rear screen surface. If the screen will be used for multiple projection methods, choose the screen surface that meets the requirements of the lesser performing projection method. For example, if using a 600 lumen projector and a 1,000 lumen projector, choose the screen surface for the 600 lumen projector.

How to Calculate a Custom Screen Size

Use the following formulas to calculate a custom size. These formulas will assist you in finding the viewing area only.

NTSC (1.33) Video Format	HDTV (1.78) Video Format	Letterbox (1.85) Video Format	SXGA (1.25) Video Format
Diagonal/1.667=Height Height x 1.33=Width Width/1.33=Height Height x 1.667=Diagonal	Diag. x 0.49091=Height Diagonal x 0.87247=Width Height x 2.0395=Diagonal Width x 1.12585=Diagonal Height x 1.78=Width Width x 0.561837=Height	Diagonal x 0.4762=Height Diagonal x 0.88=Width Height x 2.1=Diagonal Width x 1.135=Diagonal Height x 1.85=Width Width x 0.5405=Height	Diagonal x 0.625=Height Diagonal x 0.78125=Width Height x 1.60=Diagonal Width x 1.28=Diagonal Height x 1.25=Width

Projection Screen Surfaces

Screen surface can be cleaned.	Flame retardant.	Mildew resistant.	Indicates Goniophotometer reflectance reading. The higher the number, the greater light transmitted to the surface.	Number shows the optimal width of the ideal viewing half angle.

MATTE WHITE

One of the most versatile screen surfaces and a good choice for situations when presentation material is being projected and ambient light is controllable. Its surface evenly distributes light over a wide viewing area. Colours remain bright and life-like, with no shifts in hue.



HIGH CONTRAST MATTE WHITE

Designed for moderate output DLP and LCD projectors, this screen surface is a great choice when video images are the main source of information being projected and where ambient light is moderately controlled. With its specially designed grey base material and reflective top surface, this screen material is able to provide very good black levels without sacrificing the white level output.



VIDEO SPECTRA™ 1.5

This screen surface is specially designed with a reflective coating which provides an increased amount of brightness with a moderately reduced viewing angle. The increased gain of this surface makes it suitable for environments where ambient lighting is uncontrollable and a projector with moderate light output is utilised.



SILVER MATTE

A uniquely designed screen surface with a specially designed silver finish. This surface is perfect for situations where a silver surface is necessary for polarised 3-D projection. The matte finish of this surface successfully rejects ambient light.

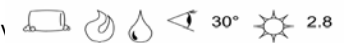
HIGH POWER

This screen surface is a technological breakthrough, providing the reflectivity and optical glass beaded surface with the ability to clean the surface when necessary. Its smooth textured surface provides the highest gain of all front projection screen surfaces with no resolution loss. The moderate viewing angle and its ability to reflect light back along the projection axis make this surface the best choice for situations where there is a moderate amount of ambient light and they projector is placed on a table-top or in the same horizontal viewing plane as the audience.



DA-MAT™

A screen surface with a smooth, white vinyl finish for precise image reproduction that provides a wide viewing angle with no resolution loss. It is a highly flexible fabric that may be folded or rolled. Its versatility makes it a great choice for situations with good control over ambient light and where an exceptional wide viewing angle is necessary.



Projection Screen Surfaces

AUDIO VISION

Designed for applications where a more realistic soundstage is desired, this fabric allows for the installation of speakers to be placed behind the surface. With virtually no sound loss and good image quality, this fabric provides the same optical characteristics as the Da-Mat surface with specially designed perforations to allow the sound to pass through the screen material.



HIGH CONTRAST DA-MAT™

With a special grey surface, this screen material is designed for use with today's high output LCD, DLP and D-ILA projectors. By lowering the black levels of the projected video image, this surface creates a more film-like image and is a good choice when video is the main source of projected information. This screen surface is best used when there is good control of ambient light and a moderately wide viewing angle is desired.



HIGH CONTRAST CINEMA VISION

Designed for today's moderate output DLP and LCD projectors, this screen surface is a great choice when video images are the main source of information being projected and where ambient light is moderately controlled. With its specially designed grey base surface and a reflective top surface, this screen material is able to provide very good black levels without sacrificing the white level output. With its enhanced black levels and brilliant white levels, this screen surface provides deep life-like colours and greater detail and sharpness to the image.



HIGH CONTRAST AUDIO VISION

With the same optical characteristics as the High Contrast Da-Mat material, this surface is designed to provide the viewer with a more realistic soundstage by placing speakers behind the screen and allowing the sound to be transmitted through the material. This screen surface is best used when there is good control of ambient lighting and a moderately wide viewing angle is desired.



HIGH CONTRAST CINEMA PERF

With the same optical characteristics as High Contrast Cinema Vision, this surface is perforated to allow placement of a centre channel speaker behind the screen surface while allowing the sound to transmit through the material. Ideal for use in environments with moderate control of ambient light.



SILVER VISION

This screen surface is uniquely designed with a specially formulated silver finish. This surface is perfect for situations where a silver finish is necessary for polarised 3-D projection. The matte finish of this surface successfully rejects ambient light. It is a highly flexible fabric that must be tensioned.

