

Replaces all previous versions

Effective 24th April 2007

# FOOD HANDLING SYSTEMS

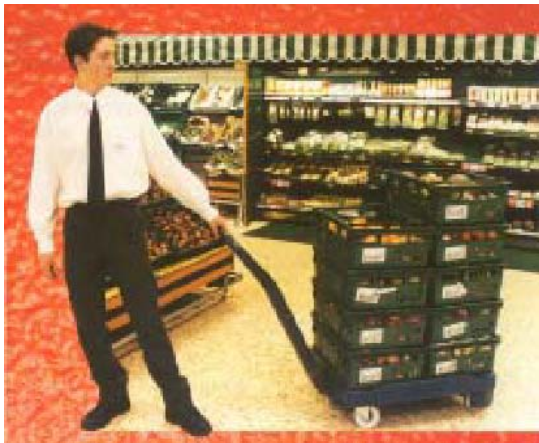
## DOLLIES & CRATES - POLY

DESIGNED FOR EASY MOVEMENT OF PRODUCT TO THE FOOD INDUSTRY.  
 THESE DOLLIES CAN BE EFFICIENTLY STORED.

REDUCED MAINTENANCE AND EASY CLEANING.

!!! 12 Months Warranty !!!

### DOLLIES



Dimensions: 770x580 mm

125mm Resilex-Non marking castors.

Removable Handle.  
 Flat Top or with Indents.

MATERIAL:  
 Linear Low Density Polyethylene.



Shown with non-standard nylon wheels.

Dolly Colours: Sea Blue (SB), Dark Green (DG)(Illustrated), Mist Green (MG), White (WH), Merino, Wheat, Beige, Light Silver, Slate Grey, Mountain Blue, Heritage Red, RiverGum Green, Black, Caulfield Green.

### CRATES

FOR USE WITH  
 INDENTED OR FLAT  
 TOP DOLLY

Suitable for  
 Coolrooms down  
 to 0 degrees.



# IH3138  
 Green Illustrated

VENTILATED CRATE FOR AIR CIRCULATION  
 - STACKING OR NESTING - 36 LTR

FOR USE WITH FLAT TOP DOLLY



# IH3013BLU

NON VENTILATED SECURITY CRATE  
 WITH FOLDING (2) SECTION LID.  
 Colours: Blue (STD), Others (T.B.A)

Code	Description
# MH1680 - (XX)	Roll Dolly - 400Kg - 770L x 580W x 260H - C/W Indents
# MH1678-(XX)	Roll Dolly - 400Kg - 770L x 580W x 260H - Flat Top
# MH1681-(XX)	Roll Dolly Handle - 930L x 370W - Removable
# IH3138	Crate - Stack / Nest - 580L x 387W x 240H - Ventilated - 38 Liter - Yellow
# IH3013BLU	Crate - Stack / Nest - Security - 575L x 380W x 200H - 30 Liter - Blue

(XX) Select Colour

F.O.B.

Plus GST 10% - Australia Only

All prices/specifications subject to change without notice.