

MODEL B

The Flagship of All Carriers

MODELS*	B-248 36 Volt	B-248 48 Volt	B-248 HC 36 Volt	B-254 36 Volt
TYPE	Electric	Electric	Electric	Electric
SPEED STANDARD (MPH)	11 (17.6 km/hr)	16 (25.6 km/hr)	11 (17.6 km/hr)	8 (12.8 km/hr)
RANGE (MILES)	24 (38 km)	24 (38 km)	24 (38 km)	24 (38 km)
LOAD CAPACITY (lbs)	3,000 (1360 kg)	3,000 (1360 kg)	4,000 (1814 kg)	5,000 (2268 kg)
BED SIZE (W"xL")	41"x75" (104x190 cm)	41"x75" (104x190 cm)	41"x75" (104x190 cm)	41"x75" (104x190 cm)
VOLTAGE	36	48	36	36

Based on Standard Configuration

*Typical capacity: Actual load capacity depends on application and vehicle configuration

Tough and Dependable Product Solutions

The Model B series product line of Electric Personnel and Burden carriers offers the ultimate versatility in load capacity, vehicle configuration and vehicle performance. This unique modular vehicle design allows configurations to provide precise solutions to your needs.

The Model B series, equipped with GT electric drive train, provides years of reliability with low operating costs. Our worldwide sales staff is trained to discuss your needs and then configure a Model B to realize the most cost effective solution. This customization of products provides the best value for our customers.

Taylor-Dunn® with a team of worldwide dealers pride ourselves in providing multiple solutions in single product configuration. Whether your application is carrying loads, towing loads, moving personnel, or all three, we can configure a single product to meet all your needs.

The Model B can be configured to carry up to 5,000 lbs. of load, pull 17,500 lbs. or carry up to 10 people. Equipped with an automotive differential available with either 36 or 48 volt, the Model B is one of the best values for your utility applications.

With more than 160,000 vehicles in service and over 55 years of experience in the industry, *Taylor-Dunn® products are the best way to go about your business.*



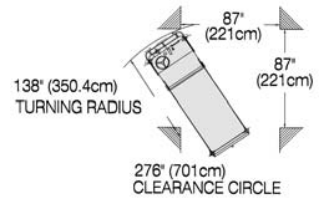
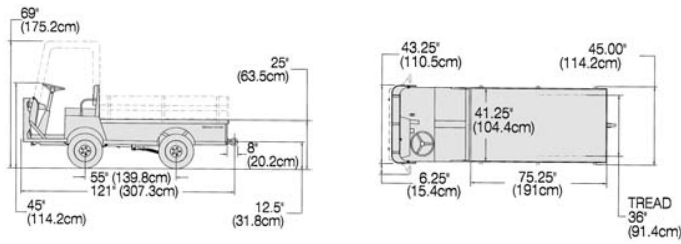
Vehicles may be shown with optional equipment



Illustrated below:
 B2-48-48 with 8 bin trailer at
 Residential development, Newington, NSW



The best way to go about your business



MODEL B STANDARD SPECIFICATIONS*

Product Line	B-248 36 Volt	B-248 48 Volt	B-248 HC 36 Volt	B-254 36 Volt
Unit Weight Lbs (Kgs)	1405 (637 kg)	1550 (702 kg)	1405 (637 kg)	1430 (649 kg)
Load Capacity Lbs (Kgs)	3000 (1360 kg)	3000 (1360 kg)	4000 (1814 kg)	5000 (2268 kg)
Battery Type	6 Ea., 6V, 217 Amp Hour	8 Ea., 6V, 217 Amp Hour	6 Ea., 6V, 217 Amp Hour	6 Ea., 6V, 217 Amp Hour
System Voltage	36V DC	48V DC	36V DC	36V DC
Drive Axle	GT Automotive Type, Differential	GT Automotive Type, Differential	GT Automotive Type, Differential	GT Automotive Type, Differential
Transmission	Oil Bath, Helical Gears	Oil Bath, Helical Gears	Oil Bath, Helical Gears	Oil Bath, Helical Gears
Motor	7.6 HP DC Separately Excited	9.7 HP DC Separately Excited	7.6 HP DC Separately Excited	11.5 HP DC Separately Excited
Tires	5.70 X 8, Pneumatic	5.70 X 8, Pneumatic	5.00 X 8, Soft Solid	18 X 5 X 14 Solid Cushion
Brakes	2 Rear Wheel, Hydraulic Disc	4 Wheel, Hydraulic Disc	4 Wheel, Hydraulic Disc	4 Wheel, Hydraulic Disc
Steering	24:1 Ratio Automotive Type	24:1 Ratio Automotive Type	24:1 Ratio Automotive Type	24:1 Ratio Automotive Type
Frame	Unitized Fully Welded 16 GA Heavy Duty Diamond Plate Steel	Unitized Fully Welded 16 GA Heavy Duty Diamond Plate Steel	Unitized Fully Welded 16 GA Heavy Duty Diamond Plate Steel	Unitized Fully Welded 16 GA Heavy Duty Diamond Plate Steel
Bumper	Heavy Duty Steel Integrated Front & Rear	Heavy Duty Steel Integrated Front & Rear	Heavy Duty Steel Integrated Front & Rear	Heavy Duty Steel Integrated Front & Rear
Suspension	Leaf Spring Front & Rear, Dual Rear Shocks	Leaf Spring Front & Rear, Dual Rear Shocks	Leaf Spring Front & Rear, Dual Rear Shocks	Leaf Spring Front & Rear, Dual Rear Shocks
Color	Safety Orange	Safety Orange	Safety Orange	Safety Orange
Seats	Split Seat Cushion With Full Length Back Rest Covered With Black Vinyl	Split Seat Cushion With Full Length Back Rest Covered With Black Vinyl	Split Seat Cushion With Full Length Back Rest Covered With Black Vinyl	Split Seat Cushion With Full Length Back Rest Covered With Black Vinyl
Controller	Solid State, 36V	Solid State, 48V	Solid State, 36V	Solid State, 36V
Instrumentation	"Smart View Display" (Battery Status Indicator, Hour meter, "Fault Code" display). Reverse Alarm	"Smart View Display" (Battery Status Indicator, Hour meter, "Fault Code" display). Reverse Alarm	"Smart View Display" (Battery Status Indicator, Hour meter, "Fault Code" display). Reverse Alarm	"Smart View Display" (Battery Status Indicator, Hour meter, "Fault Code" display). Reverse Alarm
Light Accessories	Single Headlight, Dual Taillights w/Brakelights	Single Headlight, Dual Taillights w/Brakelights	Single Headlight, Dual Taillights w/Brakelights	Single Headlight, Dual Taillights w/Brakelights
Charger	1KW, Built In, Automatic w/Interlock	1KW, Built In, Automatic w/Interlock	1KW, Built In, Automatic w/Interlock	1KW, Built In, Automatic w/Interlock
Input Voltage	110/60 Hz.	110/60 Hz.	110/60 Hz.	110/60 Hz.
Conformance	Type E OSHA Requirements 1910.178, ANSI B56.8 Requirements	Type E OSHA Requirements 1910.178, ANSI B56.8 Requirements	Type E OSHA Requirements 1910.178, ANSI B56.8 Requirements	Type E OSHA Requirements 1910.178, ANSI B56.8 Requirements



MODEL B OPTIONAL FEATURES

Charger

- Portable charger

Accessories

- Strobe light, amber - on pole, or top of cab
- Dual headlights, directional signals
- Hour meter, Automatic park brake

Deck

- 1,000 lb. capacity, electric hydraulic dump body
- Stake sides, removable end gate, 14" high
- 96 inch bed length (extended wheel base)
- Welding tank cutouts
- Stake sides and end gates, fold down
- Steel panel cargo box

Battery Compartment

- 244 a.h. batteries
- Lift out battery box
- Roll out battery box

Hitches

- Automatic coupling, trailer
- Pintle trailer
- Ball hitch and bracket

Brakes

- Front wheel hydraulic disc (36V unit)

Cab

- Steel cab with doors
- Steel or vinyl doors for steel cab
- Fiberglass cab
- Vinyl doors for fiberglass cab

Top Covers

- Fiberglass or surrey top cover

Frame

- Foldaway seat for 2 additional passengers
- Permanent seating 4-6 passengers
- Smooth skin

* Based on standard configuration

Color

- Green, white, yellow or special paint colors
- Undercoating

Factory Customization

- Maintains OSHA Compliance
- Contact Your Local Dealer for Details



LS-248-27
2/08