

Replaces all previous versions

Effective 6th June 2011



# TUG MINI - 500 kg Capacity

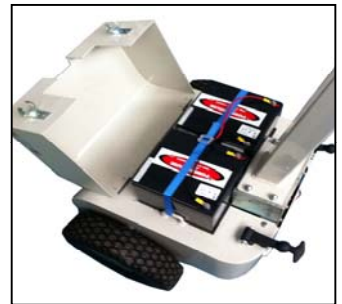
The New Tug Mini is a battery powered mobile towing unit with a capacity of 500kgs for moving a variety of trolleys. The unique battery powered Tug Mini simply hooks on to the existing trolley, converting it into an "easy to move" motorised assembly. Safety and productivity is greatly increased, and back or shoulder strain is eliminated. With a small footprint, the Tug Mini can easily be stored in tight areas.

**Standard Features include:**

- 24 Volt DC power
- Adjustable Height Towing Hitch
- Variable speed drive unit
- Electro-magnetic park brake
- Ability to easily manage a 500kg trolley
- Tiller handle steering that folds up to reduce space in lifts
- Programmable motor controller
- Automatic 8amp battery charger
- Top mount battery box for ready access
- Large diameter drive wheels for maximum traction,  
 Size: 410 x 350 x 6 - Black (as Standard)

**Options:**

- E Stop option emergency stop button (Mushroom Button) - POA
- Battery upgrade options from 26 amp to 44 A/H, Top mount - POA
- Linen trolley clamp for adjustable clamping to suit trolleys
- 250mm Ø Poly Filled puncture proof Tyres
- Horn fitted to tiller arm



Part Number	Description	
# TUG-TM	Tug Mini - 500 kg Tow capacity	
<b>Optional Extras:</b>		
# TUGLETCLAMP	Adjustable Clamp to suit trolley	<b>Please email to spacepac@spacepac.com.au for current pricing</b>
# TUG-WL-G4F	250mm Ø Poly Filled puncture proof Tyres	
# TUG-EL-HORN	Horn fitted to tiller arm	
# TYRE-GRY	Non Marking Grey Tyres	

**Tug Mini - 12 Month Warranty; Battery - Manufacture Warranty**

All prices/specifications subject to change without notice.

Add 10 % GST Australia only