

Quickhitch & Telehandler

Skid Steer Fork Carriage

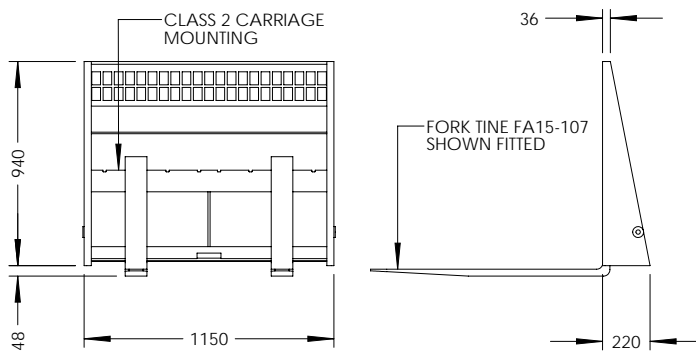
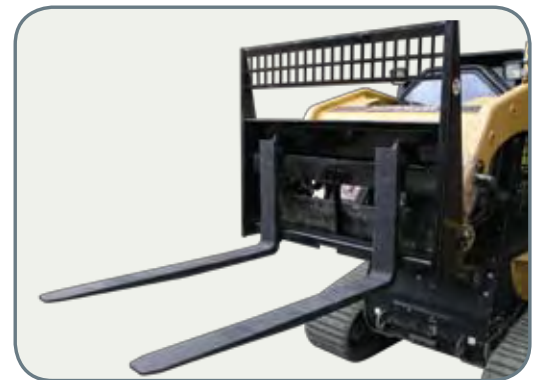
Type FC 1500 Fork Carriage

Quick release fork carriage assembly to suit skid steer and track loaders. The fork carriage is manufactured with a Class 2 fork tine mounting. Enamel paint finish. Please contact us for suitability to your machine.

- Safe Working Load: 1500 kg at 500 mm L/C
- Carriage Width: 1150 mm
- Unit Weight: 85 kg (excluding fork tines)

The FC1500 is suitable for the following range of Class 2 mounting fork tines (sold separately)

- FA12-100: 80 mm x 35 mm x 1000 mm long
- FA15-107: 100 mm x 32 mm x 1070 mm long
- FA15-120: 100 mm x 32 mm x 1200 mm long

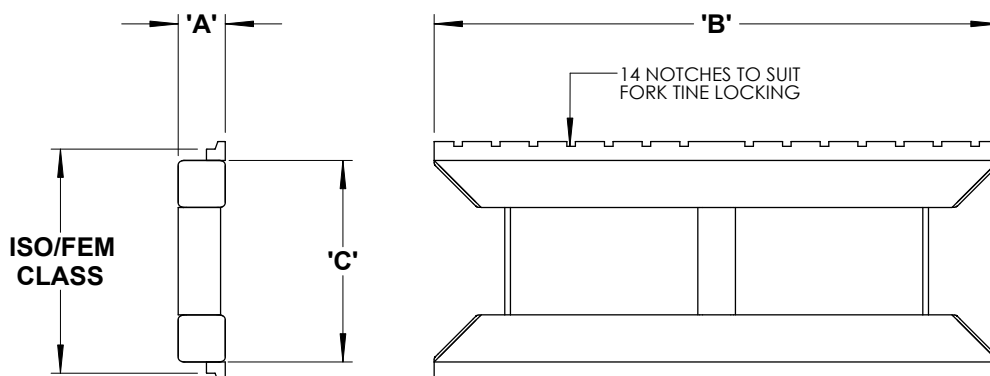


Quickhitch & Telehandler

Universal Fork Carriage

Type CB Universal Carriage

The CB Universal Carriage is a weld on unit suitable for all machinery and agricultural applications where fork arms are to be fitted. Manufactured from high grade steel in accordance with AS2359.11, the carriage is precision machined to suit either Class 2 or Class 3 fork tines.



Type	ISO / FEM Class	SWL @ 500mm Load Centre	Unit Weight (kg)	"A" (mm)	"B" (mm)	"C" (mm)
CB2-1500	2	1500 kg	36	60	1200	347
CB2-2500	2	2500 kg	44	80	1200	347
CB3-5000	3	5000 kg	70	100	1200	428