

Forklift Attachments

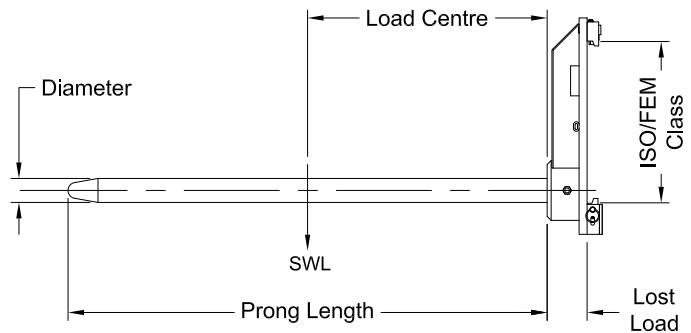
Roll Prongs

Type RPC Carriage Mounted Roll Prong

The RPC Carriage Mounted Roll Prong is suitable for carpet, vinyl, fabric etc. Units are available for Class 2, Class 3 and Class 4 forklift carriages, along with pin mounted.

All "QR" model roll prongs are fitted with "Quick Release" mounting locks providing a safe and easy connection to the forklift carriage, saving time and eliminating the need for any tools. Prongs are made from high tensile steel. Enamel paint finish.

- Lost Load for Class 2: 100 mm
- Lost Load for Class 3: 225 mm
- Lost Load for Class 4: 280 mm



Type	Mounting Class	Prong Diameter (mm)	Prong Length (mm)	Safe Working Load / Load Centre	Unit Weight (kg)
RPC-QR2-40-1200	Class 2	40	1200	200 kg at 600 mm	63
RPC-QR2-50-1800	Class 2	50	1800	250 kg at 900 mm	79
RPC-QR2-60-2800	Class 2	60	2800	340 kg at 1400 mm	113
RPC-QR2-70-2800	Class 2	70	2800	510 kg at 1400 mm	135
RPC-QR2-80-2800	Class 2	80	2800	850 kg at 1400 mm	166
RPC-QR3-70-2800	Class 3	70	2800	510 kg at 1400 mm	190
RPC-QR3-80-2800	Class 3	80	2800	850 kg at 1400 mm	220
RPC-QR3-100-2800	Class 3	100	2800	1700 kg at 1400 mm	282
RPC-BH4-125-1200	Class 4	125	1200	6500 kg at 600 mm	280
RPC-BH4-125-2800	Class 4	125	2800	2785 kg at 1400 mm	440
RPC-BH4-150-1200	Class 4	150	1200	10,000 kg at 600 mm	360
RPC-BH4-150-2800	Class 4	150	2800	4285 kg at 1400 mm	565
RPC-PM-200-1200	Pin Mount	200	1200	13,000 kg at 600 mm	1400

OTHER PRONG LENGTHS AVAILABLE ON REQUEST

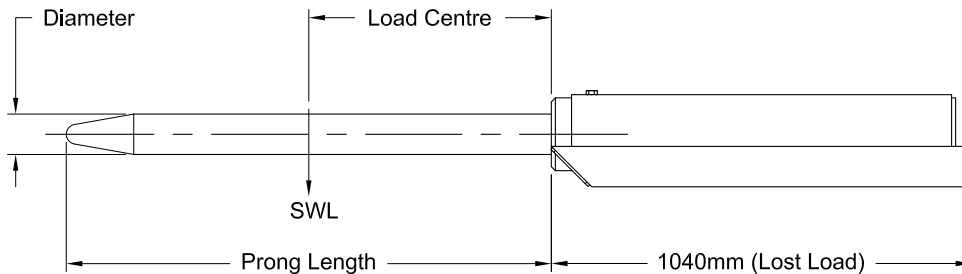
Forklift Attachments

Roll Prongs

Type RPS Slip-On Roll Prong

Slip on roll prongs are quick and easy to mount on any forklift, although they are better suited to larger capacity forklifts due to the extended load centre created by the fork tines. Enamel paint finish.

The Safe Working Load (SWL) of this unit varies depending on prong chosen. Please refer to the table below.



Type	Fork Pocket Size (mm)	Fork Pocket Centres (mm)	Prong Diameter (mm)	Prong Length (mm)	Safe Working Load / Load Centre	Unit Weight (kg)
RPS-2N-40-1200	190 x 65	345	40	1200	200 kg at 600 mm	91
RPS-2N-50-1800	190 x 65	345	50	1800	250 kg at 900 mm	106
RPS-2N-60-2800	190 x 65	345	60	2800	340 kg at 1400 mm	141
RPS-2N-70-2800	190 x 65	345	70	2800	510 kg at 1400 mm	163
RPS-2N-80-2800	190 x 65	345	80	2800	850 kg at 1400 mm	194
RPS-3N-100-2800	180 x 80	360	100	2800	1700 kg at 1400 mm	328

OTHER PRONG LENGTHS AVAILABLE ON REQUEST

Please note the Safe Working Load shown has been calculated at the centre of the prong. If the product being lifted exceeds the length of the prong please contact East West Engineering for a revised Safe Working Load.