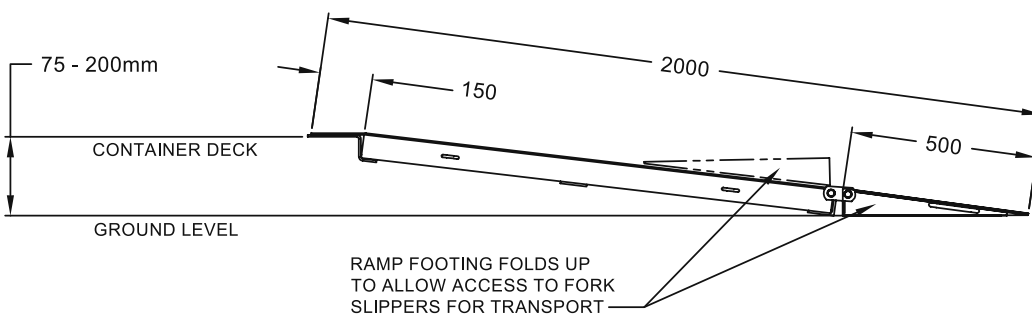
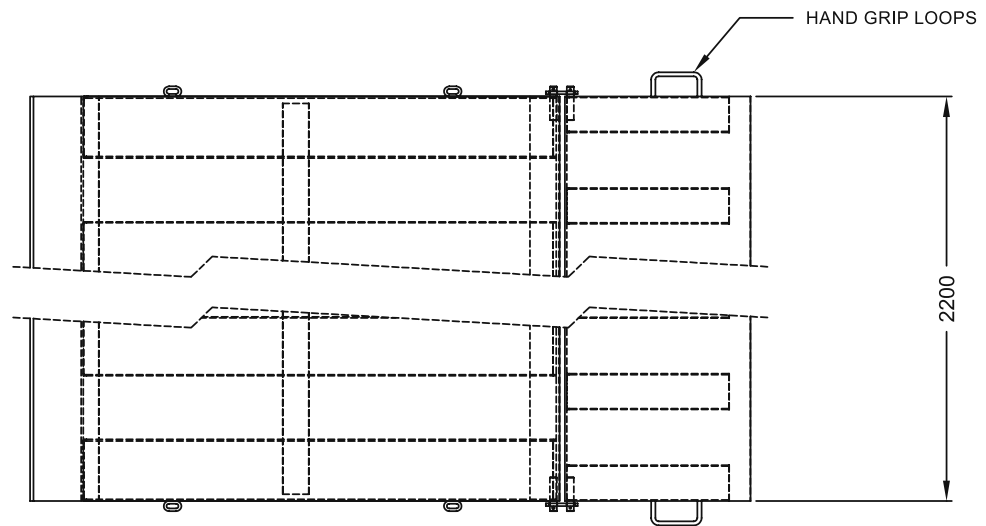


**Forklift Attachments** **Container Access Ramps**

**Type CRN65 Ramp**

The CRN65 Container Ramp is designed for bridging into standard containers from ground level. The self-levelling lip allows for full load capacity when on slightly uneven ground. The ramp footing folds up to allow access to the fork slippers for transport. Hand grip loops are provided for this purpose. The standard finish is enamel painted Safety Yellow.

- Safe Working Load: 6500 kg
- Unit Weight: 275 kg
- Width: 2200 mm
- Length: 2000 mm
- Fork Pocket Size: 165 mm x 60 mm
- Fork Pocket Centres: 775 mm

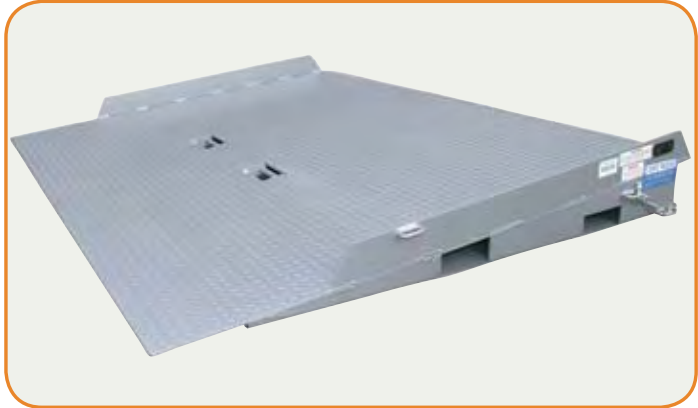


**Forklift Attachments** **Container Access Ramps**

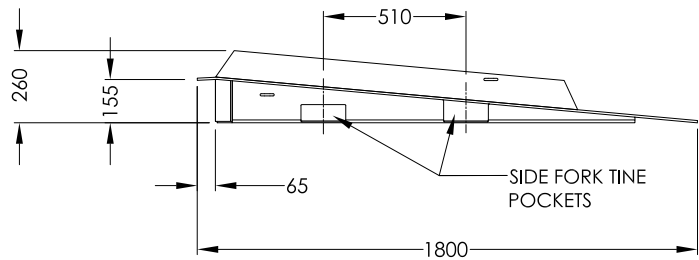
**Type CRS8 Container Ramp**

The CRS8 Container Ramp has been designed for fast positioning and removal. Fitted with pockets each side, plus flip-up front tine pockets, this ramp can be manoeuvred easily in confined spaces.

Raised side plates prevent the forklift from driving off the side. The tread plate decking is fully gusseted underneath to eliminate fatigue. Securing safety chains both sides of the ramp for connection to the container. Enamel paint finish.



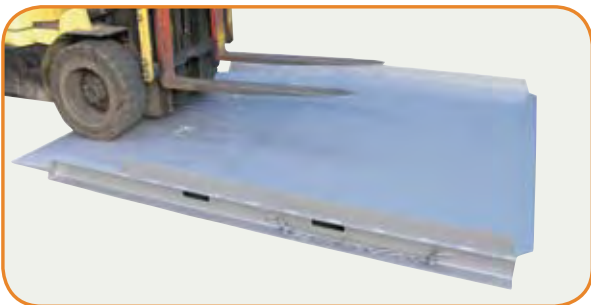
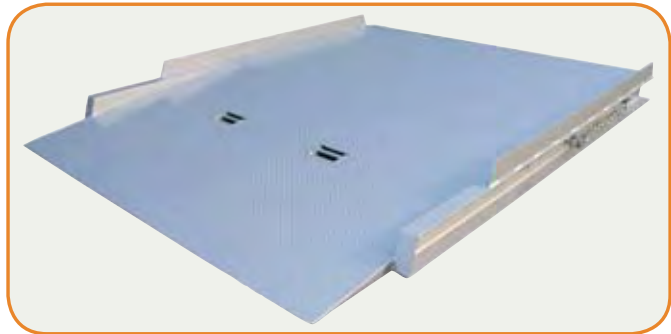
- Safe working load: 8000 kg
- Unit Weight: 410 kg
- Driveway width: 2320 mm
- Overall Length: 1800 mm



**Type CRL8 Container Ramp**

The CRL8 Container Ramp has an overall length of 3 metres (1.5 metres of which is horizontal) allowing even easier placement and removal of the first and second line of pallets in a container.

Fork pockets are provided either side of the ramp along with flip-up front tine pockets for ease of transport. Securing safety chains both sides of the ramp for securing to the container. Enamel paint finish.



- Safe working load: 8000 kg
- Unit Weight: 600 kg
- Driveway width: 2320 mm
- Overall Length: 3000 mm

