



CONVEX MIRRORS – Outdoor

An extremely durable weather-proof mirror suitable for road and pedestrian traffic applications, distribution depots and parking areas. Unbreakable polycarbonate face with high visibility orange visor.
All of these mirrors come complete with both wall mount brackets and post mount brackets to suit a 60mm diameter post. Additional 60mm wall mount brackets are available if required.



Wall mount bracket.



Post mount bracket.



Value features:

- » Weather-proof unbreakable polycarbonate face.
- » Comes standard with both wall and post mounting brackets.
- » Optional wall mount bracket available.
- » Four standard sizes.
- » All fit 60mm diameter posts.

PART No.	DESCRIPTION
MC4500D	450mm Outdoor convex mirror
MC6000D	600mm Outdoor convex mirror
MC8000D	800mm Outdoor convex mirror
MC10000D	1000mm Outdoor convex mirror

PART No.	DESCRIPTION
SP2800	2800 x 60mm galvanised post
CAP60	Galvanised post cap to suit 60mm sign post
MCB60	Wall mount bracket for MC450 / 600

SECTION 8.3.2

CONVEX MIRRORS – Indoor

All of these mirrors come complete with both wall mount brackets and post mount brackets to suit a 60mm diameter post. Additional 60mm wall mount brackets are available if required.



Wall mount bracket.



Post mount bracket.



Value features:

- » Unbreakable polycarbonate face.
- » Fully adjustable to any angle.
- » Extends field of view over a broad area.
- » Supplied with wall and post mount brackets.
- » All fit 60mm diameter posts.

PART No.	DESCRIPTION
MC300ID	300mm Indoor convex mirror
MC450ID	450mm Indoor convex mirror
MC600ID	600mm Indoor convex mirror
MC800ID	800mm Indoor convex mirror
SP2800	2800 x 60mm galvanised post
CAP60	Galvanised post cap to suit 60mm sign post
MCB60	Wall mount bracket for MC450 / 600

SECTION 8.3.3

CONVEX MIRRORS – Indoor Dome

An economical, lightweight alternative where general surveillance of a broad area is required. Full domes may be suspended on chains or fixed directly to the ceiling and provide a 360° view. Half domes provide a 180° view and corner domes provides a 90° view.

Value features:

- » Lightweight and simple mounting.
- » Full, half or corner domes for any situation.
- » Unbreakable polycarbonate face.
- » No maintenance required.



See Section 5 for vehicle inspection mirror.



PART No.	DESCRIPTION
D60360	600mm Dome mirror
D60180	600mm Half Dome mirror
D6090	600mm Corner Dome mirror

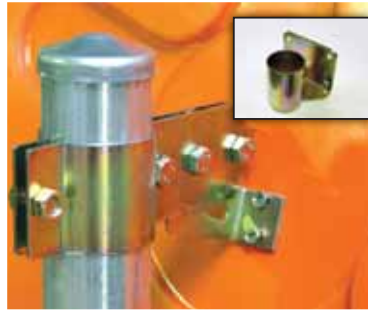


CONVEX MIRRORS – Hi-viz Round

Tough shatter proof polycarbonate mirror lens with durable moulded fibreglass backing.
The outer rim of the lens which is moulded as one piece with the backing panel, has the added advantage of being highly visible at night or in low light, due to the premium grade class 1 reflective surface.
Suitable for indoor or outdoor applications to increase visibility and eliminate blind corners.
Supplied with both wall and post mount brackets to suit 60mm diameter posts.

Value features:

- » Weatherproof unbreakable polycarbonate lens.
- » High visibility Red/White class 1 reflective rim.
- » One piece moulded fibreglass back panel.
- » Available in 4 standard sizes.
- » Supplied with wall and post mount brackets.



Post mount bracket & wall mount bracket (inset).



PART No.	DESCRIPTION
MC450HV	450mm diameter Hi-viz Indoor/Outdoor mirror
MC600HV	600mm diameter Hi-viz Indoor/Outdoor mirror
MC800HV	800mm dia. Hi-viz Indoor/Outdoor mirror

PART No.	DESCRIPTION
MC1000HV	1000mm diameter Hi-viz Indoor/Outdoor mirror
SP2800	2800 x 60mm galvanised post
CAP60	Galvanised post cap to suit 60mm sign post
MCB60	Wall mount bracket for MC450 / 600

CONVEX MIRRORS – Hi-viz Roundtangular

The Roundtangular Hi-viz mirror has all the same structural features as the round model above.
The elongated shape allows a wider field of view while allowing a more compact shape.
Also suitable for indoor or outdoor use and is supplied with mounting brackets.
Supplied with both wall and post mount brackets to suit 60mm diameter posts.
The one-piece outer rim with class 1 reflective is moulded into the backing panel.

Value features:

- » Weatherproof unbreakable polycarbonate lens.
- » Highly visible Red/White class 1 reflective rim.
- » One piece moulded fibreglass back panel.
- » Wider field of view with compact shape.
- » Supplied with wall and post mount brackets.



Post mount bracket & wall mount bracket (inset).



PART No.	DESCRIPTION
MC570RHV	390 x 570mm Roundtangular Hi-viz mirror
MC640RHV	440 x 640mm Roundtangular Hi-viz mirror
MC830RHV	550 x 830mm Roundtangular Hi-viz mirror

PART No.	DESCRIPTION
MC970RHV	660 x 970mm Roundtangular Hi-viz mirror
SP2800	2800 x 60mm galvanised post
CAP60	Galvanised post cap to suit 60mm sign post
MCB60	Wall mount bracket for MC450 / 600

CONVEX MIRRORS – Stainless Steel

Stainless steel offers the ultimate in long term weather and impact resistance for convex mirrors.
They are particularly suited to outdoor environments where vandalism is likely to occur, including public areas, roads, railway stations, airports and prisons etc.
Supplied with heavy duty hot dip galvanised bracket to suit 75mm post.

Value features:

- » Suitable for extreme weather conditions.
- » Unbreakable and high impact resistance.
- » Long life span/reduced cost over long term.
- » Virtually maintenance free.
- » 75mm post mount bracket included.
- » Reduced radius of lens gives better viewing.



PART No.	DESCRIPTION
MC600SS	600mm Stainless Steel convex mirror
MC800SS	800mm Stainless Steel convex mirror



PART No.	DESCRIPTION
MC1000SS	1000mm Stainless Steel convex mirror
SP2800/75	2800 x 75mm galvanised post
CAP75	Galvanised post cap to suit 75mm sign post