



FILE IT AND FIND IT WITH QUICKFILE™

New Time & Space Saving Features

The **Hang-A-Plan** range has been extended with an addition of two new and innovative products. The new **Quickfile** front loader binder saves you time filing large quantities of paper with a new "click" open and close mechanism. The **CAD Mobile Project File** has been developed to meet the increased need to file computer printouts in A3/A2 size in the office.



THE QUICKFILE BINDING SYSTEM

Hang-A-Plan Quickfile Front Loader Binder

The **Quickfile** binder has a new world patented cam lever action and alignment extension, that enable drawings to be scooped into the file and released in a fraction of the time. It's easy to use and you save hours of work with files that are constantly being revised or removed.

Quickfile is ideal for both small and large architect offices, building and construction companies, councils, oil and mining companies, engineers, surveyors, draftsmen, designers etc.

Quickfile binders have a strong super continuous grip and super strong all glass filled nylon components that are firmly embedded into the binder. Each binder has a 25mm capacity and holds from 100 to 150 sheets up to a maximum carrying weight of 9 kg.

The **Quickfile** binders are available in A0 and A1 size, in black or silver complete with index tabs, inserts and a comfortable carry handle.

Hang-A-Plan binders carry a 10-year guarantee.

The **Quickfile** binder is fully compatible with all storage racks and trolleys in both the **Hang-A-Plan** Front Loading and Drop Mount systems. **Quickfile** is dimensionally similar and interchangeable with all **Hang-A-Plan** systems.



Premium Front Loader Binders

"Click" open and shut. The following illustrations demonstrate how simple it is to use the **Quickfile** binder and highlight the patented new features.



Note the importance of the latch base that is embedded in the binder and provides both a locking device and pivoting point for viewing binders from their filed position. Also note how the jaw extension of **Quickfile** speeds up the filing procedure.

LOADING

1. OPENING Quickfile Binder

- Place binder with jaw extension on assembly table.
- Hold handle and twist each cam lever upwards.
- Pull cam levers back down to "click" open.

2. ASSEMBLING Sheets

- Assemble all sheets to be filed onto jaw extension.

3. INSERTING Sheets

- Hold assembled sheets firmly with one hand.
- Scoop the sheet up by sliding open binder forward.

4. CLOSING Quickfile Binder

- Tilt binder forward and press down to hold sheets in position.
- Push each cam lever forward.
- If too tight, rotate lever anti-clockwise and push again.

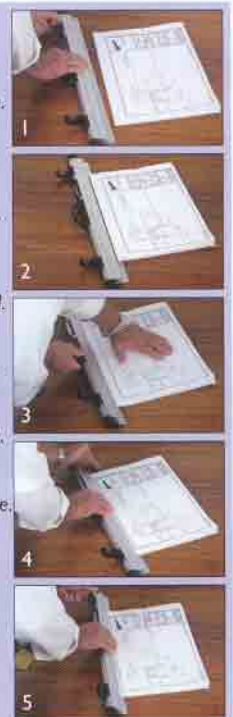
5. LOCKING Quickfile Binder

- Twist cam lever outwards to locate under lip of base.
- If too loose, rotate levers clock wise and relocate under lip.

NOTE: Do not over tighten the cam levers.

UNLOADING

- See **LOADING** Step 1.
- Hold sheets and withdraw binder.





CAD MOBILE PROJECT FILE

The **Hang-A-Plan** CAD Mobile Project File with special single clip clamps is a self-assembled trolley specially designed to hold A3/A2 size printouts. The CAD Mobile Project File is perfect for CAD/CAM users and for those who prefer the low cost and convenience of A3 photocopies.

The trolley is ideal for use in the office and can be rolled in under the desk like a mobile pedestal for storage and easy access. The total height of the trolley with clamps is 662mm. The trolley is very simple to assemble with the combination tools provided. The trolley is supplied with 8 clamps.

The CAD Mobile Project File is ideal for architects, graphic artists, designers, draftsmen, building and construction companies, councils, oil and mining companies, engineers, surveyors, draftsmen, designers etc.

The trolley has a black powder coated finish to fit with all office interiors and has a capacity to hold up to 16 clamps. The open-top trolley design makes it easy to access the clamps.

The CAD Mobile clamp has a single patented Quickfile cam lever latch at the center that takes the shape of a small D-handle and is useful for lifting and lowering the clamp onto the trolley.

The clamp holds A3 papers in both portrait and landscape format plus A2 drawings in portrait format. Each clamp has the capacity to hold up to 60 drawings. Available in black powder coated finish and complete with index tabs and inserts.

Additional clamps are supplied in boxes of 4 pieces.



REFERENCE			DIMENSIONS mm			MAXIMUM CAPACITY			CARTON
Size	Code	Model	Length	Clamp Length		Sheets	Binders	Weight	Qty
A1	D200A	Silver	650	605		150	25mm	7kg	5
A1	D200B	Black	650	605		150	25mm	7kg	5
A0	D202A	Silver	950	900		100	25mm	9kg	5
A0	D202B	Black	950	900		100	25mm	9kg	5
REFERENCE			DIMENSIONS mm			MAXIMUM CAPACITY			CARTON
Size	Code	Model	Height	Width	Depth	Sheets	Binders	Weight	Qty
A3/A2	D010	Trolley with 8 clamps	662	485	410	960	16	80kg	1
			Length	Clamp Length					
A3/A2	D011	Clamps x 4	500	445		60	25mm	4kg	1



Your Hang-A-Plan Agent :

SPACEPAC
INDUSTRIES Pty. Ltd.
39 Ellen St. Wollongong NSW 2500, AUSTRALIA
Phone: +61 2 4227 3444 • 1300 763 444
Fax: +61 2 4226 2208 • ABN 98 002 454 462
spacepac@spacepac.com.au

